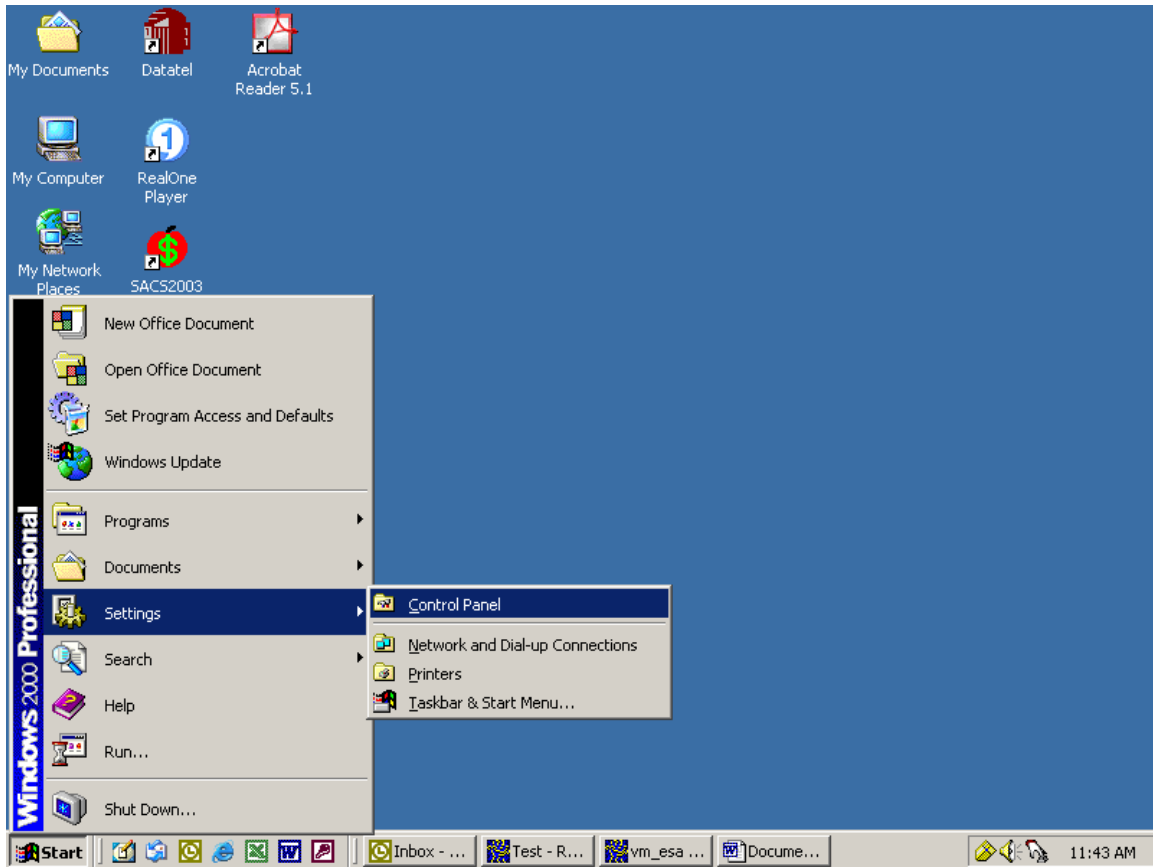
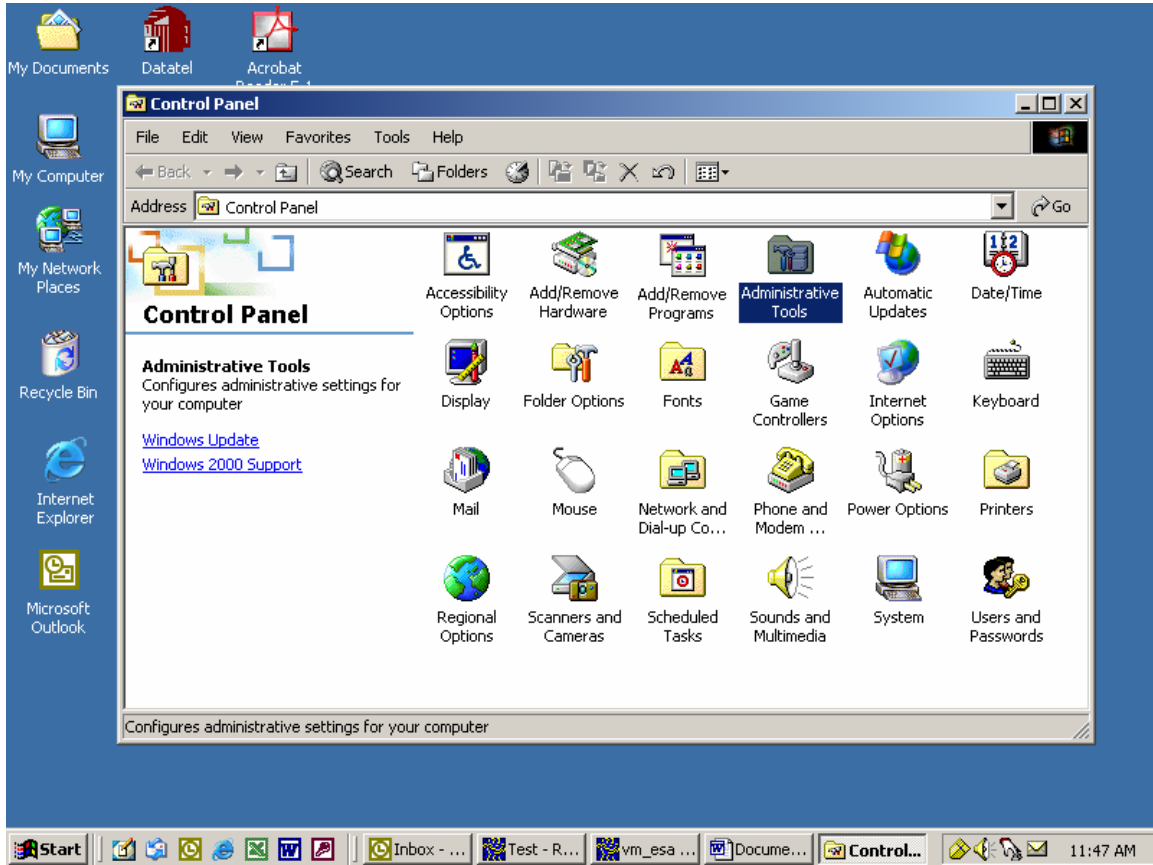


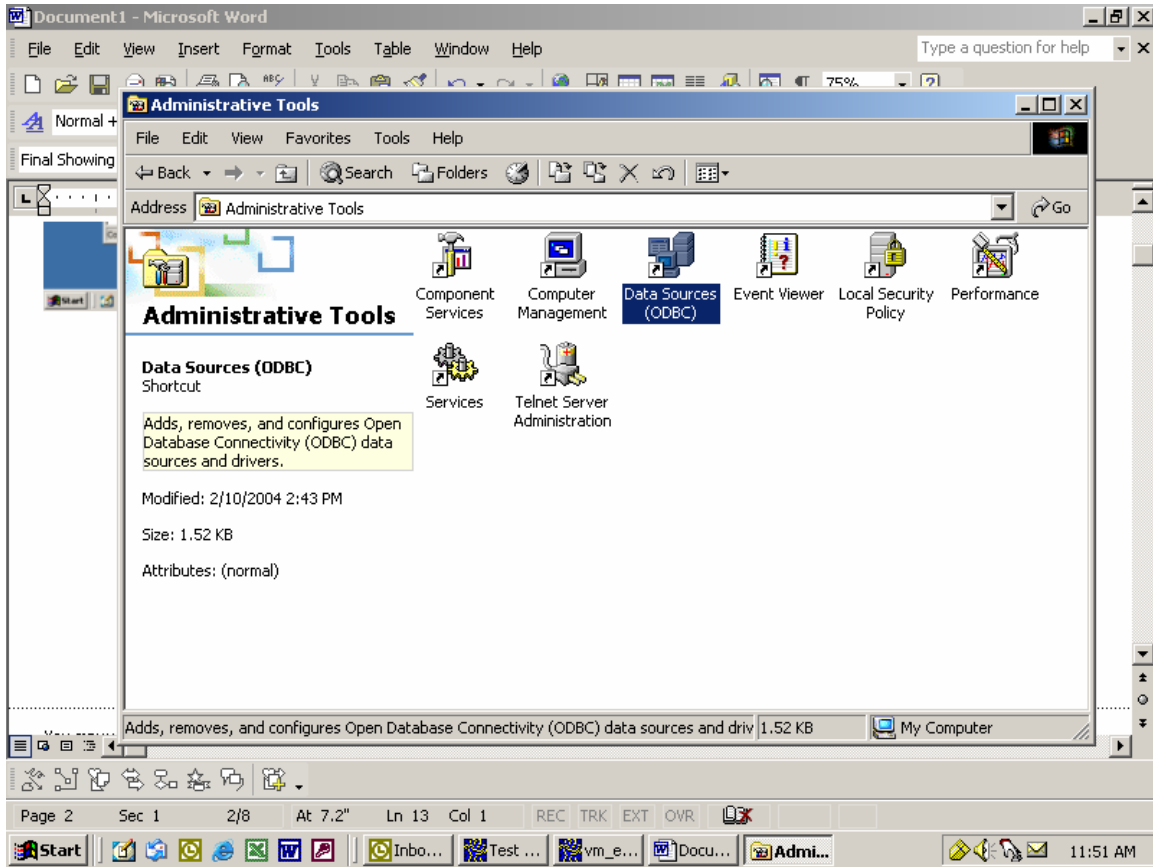
To Start:



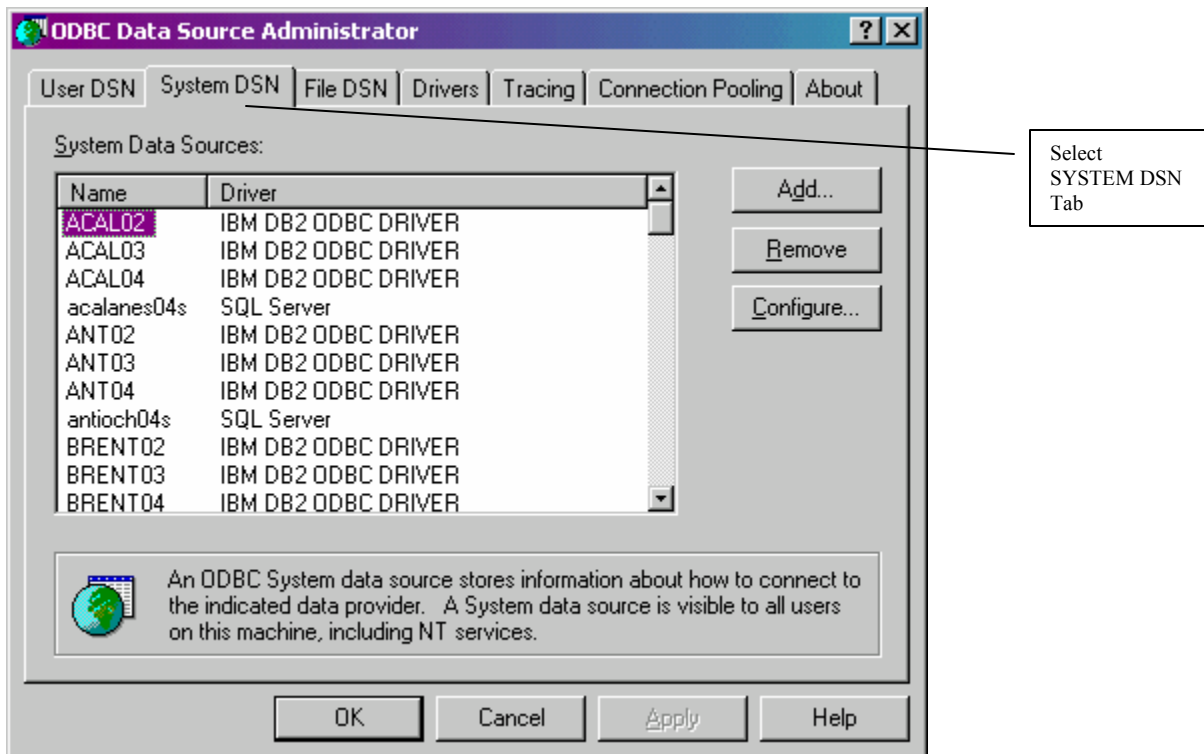
**For Microsoft 2000 or XP only: Choose Administrative tools.
For other systems, skip this step.**



Choose Data Sources (ODBC).

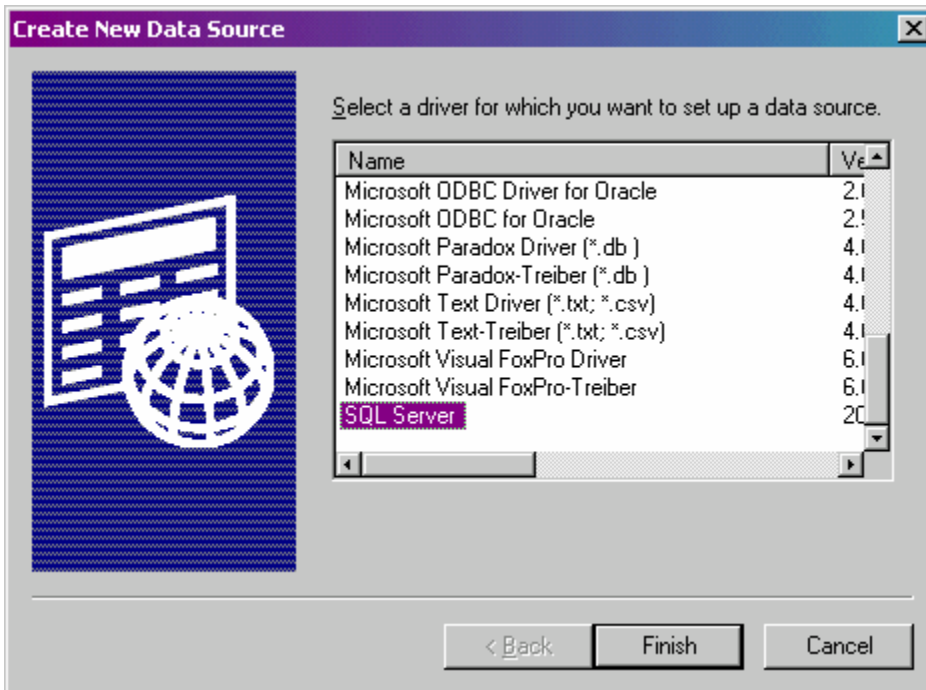


You may want to remove all the DB2 ODBC system DSN entries before you set up your new entries. After you set up the new SQL server, since you won't be using DB2 anymore, you can also delete the software (make sure you use Control Panel, so your computer's registry is updated). See pages 10 – 12 for help in deleting DB2. If you feel uncomfortable doing any of this, your local computer support person can help you. If you don't have one of these, call Janice to set up an appointment for her and Nina to come to your site.

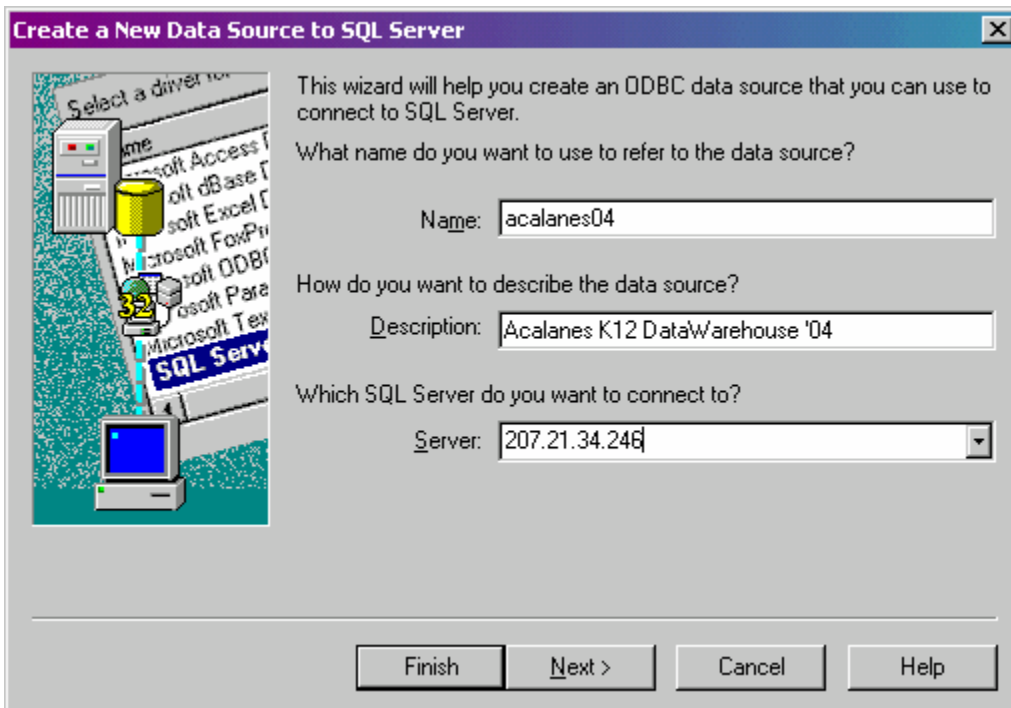


Press ADD

Scroll down to SQL Server.



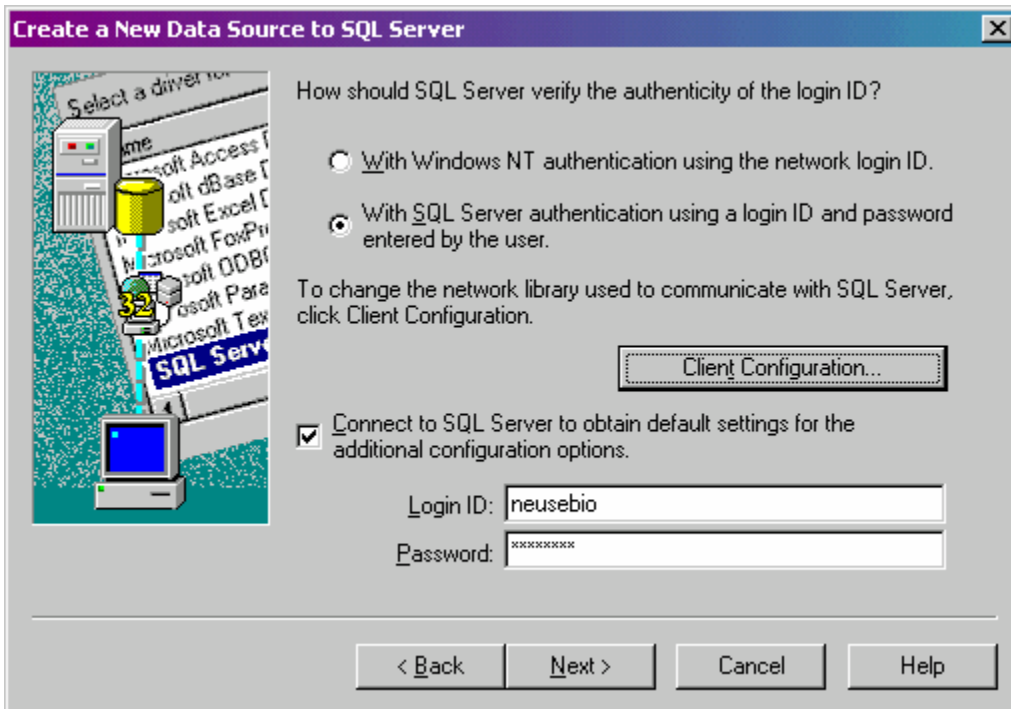
Choose SQL Server, then press Finish



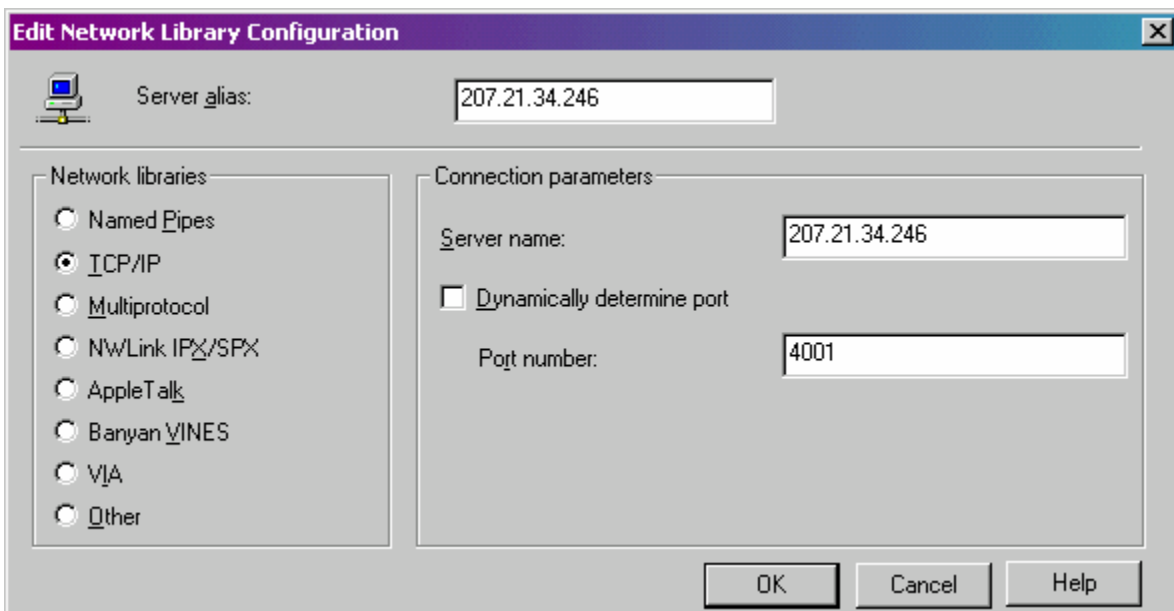
Using Acalanes as an example... then press Next >

See page 9 for Data Source Names.

If you get a Login box that says Use Trusted Connection- Uncheck the box.

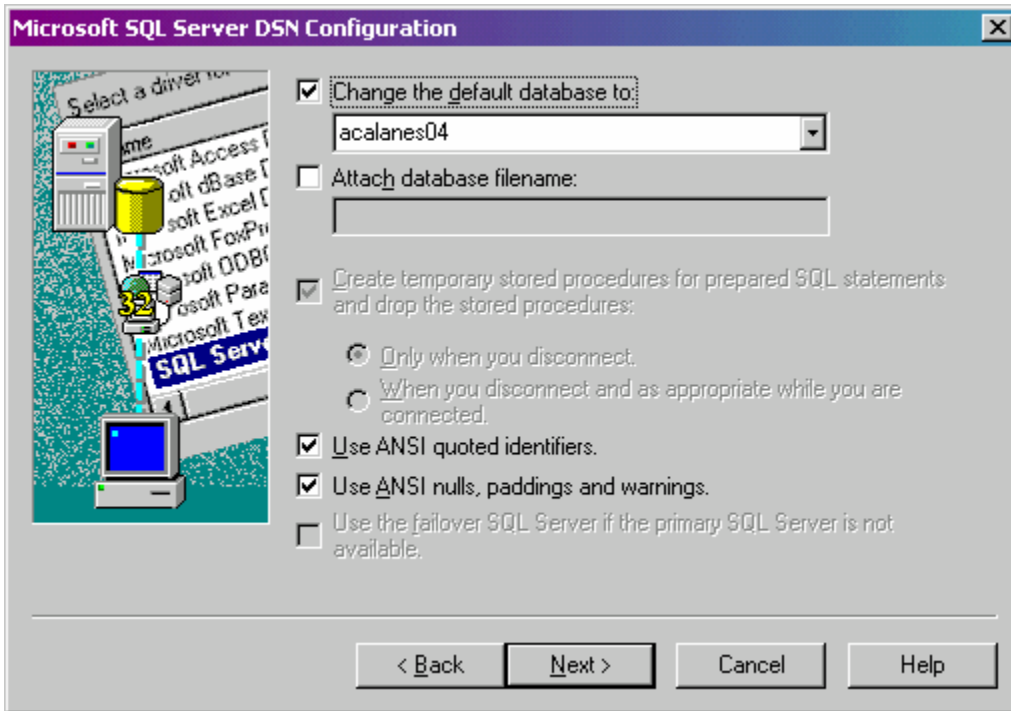


Choose SQL Server Authentication, put in your login and password, then press the Client Configuration button

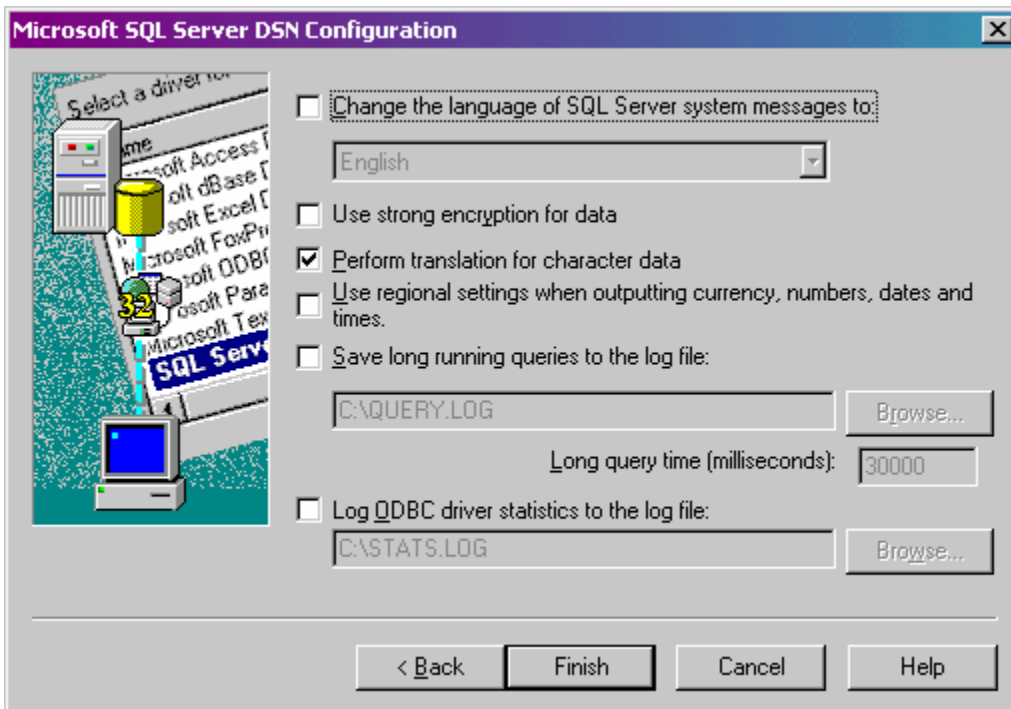


Make sure Network type is TCP/IP and port number is 4001. Press OK.

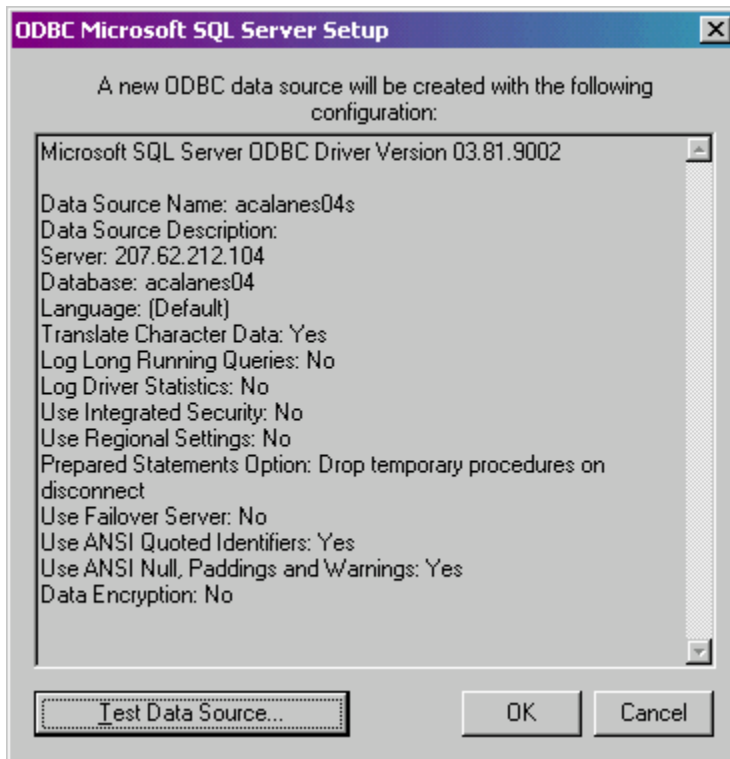
When you go to the previous screen, you may be required to enter your password again, then press Next >



Make sure that the default database is the exact database you are interested in attaching to.
Next >



You should be able to leave this screen alone. Press Finish.



Press Test Data Source. If Ok, you will be taken back to the first screen. If there is an error, it will tell you.

Here is a list of all the SQL Server database names:

Acalanes02	Lafayette02
Acalanes03	Lafayette03
Acalanes04	Lafayette04
Acalanes05	Lafayette05
Acalanes06	Lafayette06
Antioch02	Liberty02
Antioch03	Liberty03
Antioch04	Liberty04
Antioch05	Liberty05
Antioch06	Liberty06
Brentwood02	Martinez02
Brentwood03	Martinez03
Brentwood04	Martinez04
Brentwood05	Martinez05
Brentwood06	Martinez06
Byron02	Moraga02
Byron03	Moraga03
Byron04	Moraga04
Byron05	Moraga05
Byron06	Moraga06
Canyon02	Oakley02
Canyon03	Oakley03
Canyon04	Oakley04
Canyon05	Oakley05
Canyon06	Oakley06
Coe02	Orinda02
Coe03	Orinda03
Coe04	Orinda04
Coe05	Orinda05
Coe06	Orinda06
Swett02	Pittsburg02
Swett03	Pittsburg03
Swett04	Pittsburg04
Swett05	Pittsburg05
Swett06	Pittsburg06
Knightsen02	Walnut02
Knightsen03	Walnut03
Knightsen04	Walnut04
Knightsen05	Walnut05
Knightsen06	Walnut06

To Remove IBM/DB2:

