



X New

File # 7-C1

**Job**  
**Access Control System upgrade at CCCC**

|                     |                       |                    |                |                          |       |
|---------------------|-----------------------|--------------------|----------------|--------------------------|-------|
| Change Order Number | Addendum Number<br>#1 | Deferred Submittal | Clarifications | Preliminary Change Order | Other |
|---------------------|-----------------------|--------------------|----------------|--------------------------|-------|

|                            |   |                         |
|----------------------------|---|-------------------------|
| List of Material Received: | A. Master Copy<br>(3) Sets of Originals |                         |
|                            | B. Copies<br>1                          |                         |
|                            | C. Tracing(s) each                      | of Sheets(s) Numbers(s) |
|                            | D. Prints(s) each                       | of Sheets(s) Numbers(s) |
|                            | E.                                      |                         |
|                            | F.                                      |                         |

List of Material Approved:

List of Material

To:  Architect  Structural Engineer

Name: \_\_\_\_\_

Address: \_\_\_\_\_

Sent

Handed

Faxed

Item \_\_\_\_\_

Copies \_\_\_\_\_

*1-27-12 KC*

|         |              |
|---------|--------------|
| To      | From         |
| Co.     | No. of Pages |
| Fax No. | Phone No.    |

Remaining Requirements:

Corrections Required  Change Order Required

None

If Corrections are required, please submit the following:

- 1) Intact marked up check set.
- 2) This transmittal memo.
- 3) Two corrected copies of submittal.
- 4) Calculations and other back-up information.
- 5) Drawings bearing preliminary approval stamps to avoid re-review whenever possible.

*REC 30 2012*

Remarks:

---



---



---



---

Notes for Clerical Use Only:

Please make file copy of: \_\_\_\_\_  Other: \_\_\_\_\_

Extend Plans and specs approval to cover:

Revised Plans and Specs.

Additional: Plans and Specs. Scope increase: \_\_\_\_\_

Type of Approval: \_\_\_\_\_

|             |  |  |  |
|-------------|--|--|--|
| Checked by  | AC <input type="checkbox"/> Not Required | FLS <input checked="" type="checkbox"/> Not Required | SSS <input checked="" type="checkbox"/> Not Required |
| Approved by | <i>Cheryl Watson</i>                     |  |  |
| Date        | JAN 27, 2012                             |  |  |

**ADDENDUM #1**

**PROJECT MANUAL INCLUDING SPECIFICATIONS FOR**

**Contra Costa College**

**CONTRA COSTA COMMUNITY COLLEGE DISTRICT**

**DSA FILE #7-C1 DSA APPL. #01-112357**

**CCCCD PROJECT #C-523**

**TEECOM PROJECT #09169**

January 27, 2012



Arnel P. Avila E.18352

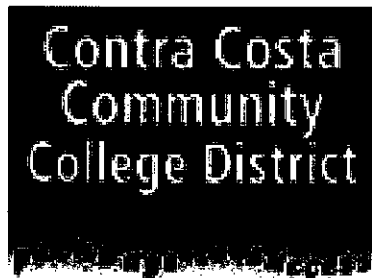
**APPROVED**

**DIV OF THE STATE ARCHITECT**

ACS Arnel P. Avila FLS \_\_\_\_\_ SSS \_\_\_\_\_

APPL NO. 01-112357 DATE 1-27-2012

DIVISION OF THE STATE ARCHITECT STAMP



**Bid Document Cover Sheet**

Contract Documents

For

**Access Control System Upgrade**

At

**Contra Costa College**

Contra Costa Community College District

**Consist of the following:**

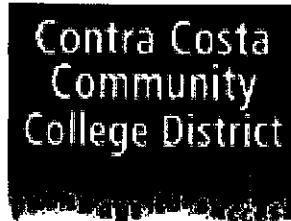
**ADDENDUM # 1**

**DSA File #7-C1, DSA Application # 01-112357**

**CCCCD Project number C-523**

**TEECOM Project #09169**

**January 27, 2012**



**CONTRA COSTA COMMUNITY COLLEGE**

500 Court St, Martinez, CA 94553

**Contra Costa College  
C-523 Access Control System Upgrade**

**ADDENDUM #1**

**Date: January 27, 2012**

---

**NOTICE TO ALL CONTRACTORS SUBMITTING BIDS FOR THIS WORK AND TO ALL PLANHOLDERS:**

You are hereby notified of the following changes, clarifications and/or modifications to the original Contract Documents, Project Manual, Drawings, Specifications and/or previous Addenda. This Addendum shall supersede the original Contract Documents and previous Addenda wherein it contradicts the same, and shall take precedence over anything to the contrary therein. All other conditions remain unchanged.

This Addendum forms a part of the Contract Documents and modifies the original Contract Documents dated **October 30, 2011**. Acknowledge receipt of this Addendum in space provided on the Bid Proposal Form. Failure to acknowledge may subject Bidder to disqualification.

---

**A. Specifications:**

Item:

1. Specification Section 13710, 1.2 System Description, after paragraph H.1.c.
  - a. **ADD:**
    - i. Addendum #1 - Access Control & Alarm Monitoring System (District Office)
      1. Survey the access control system functionality of existing card reader doors and document the status prior to performing control panel demo work. Confirm and document the state of existing security equipment prior to control panel replacement and provide a list of non-functioning locations to the Owner.
      2. Demo existing ACAMS controller and provide new ACAMS controllers/power supplies that match the campus standard. Utilize existing hardwired and wireless card readers, request-to-exit sensors, and security cabling.

- 3. Utilize host server connected to the Owner's local/wide area network.
- 4. Provide ACAMS control panels as indicated on project drawings for the District Office Building. Panels support up to 16 card readers with locking control outputs and multiple general purpose input/output modules for automation.
- 5. Utilize existing cabling to devices such as wireless modules, door contacts, and lock power supplies.
- 6. Provide battery backup for ACAMS control panels and new power supplies.
- 7. Provide control panel outputs to lock power supplies used on existing hardwired locking hardware.

**2. Specification Section 13710, 3.1 Installation, after paragraph A.3**

**a. ADD:**

- 1. Utilize existing 120VAC power at each location when replacing an existing unit. Replace plug-in type cable and receptacle with a hard-wired power connection as indicated on the drawings.
- 2. Coordinate network connectivity with Owner's IT department prior to installation.
- 3. Notify the Owner if the control panel interfaces existing devices that do not properly function.

**B. Drawings:**

| <b>Sheet Number</b> | <b>Description</b>                       |
|---------------------|--|
| AD1 - SY0.01        | Symbols List and Drawing Index           |
| AD1 - SY0.12        | Block Diagram - ACAMS - District Office  |
| AD1 - SY2.21        | Floor Plan Level 1 - District Office     |
| AD1 - SY2.22        | Floor Plan Level 2 - District Office     |
| AD1 - SY2.23        | Floor Plan Level 3 - District Office     |
| AD1 - SY2.24        | Floor Plan Level 4 - District Office     |
| AD1 - SY2.25        | Floor Plan Level 5 - District Office     |
| AD1 - SY2.26        | Floor Plan Level 6 - District Office     |
| AD1 - SY4.01        | District Office Security Panel Elevation |

**C. Attachments:**

- Drawings:
- AD1 - SY0.01
  - AD1 - SY0.12
  - AD1 - SY2.21
  - AD1 - SY2.22
  - AD1 - SY2.23
  - AD1 - SY2.24
  - AD1 - SY2.25
  - AD1 - SY2.26

# ADDENDUM #1

DSA Appl. # 01- 112357

AD1 - SY4.01

Questions or Clarifications regarding this Addendum No. 1 shall be in writing addressed to:

Jovan Esprit – Contracts Manager  
Contra Costa Community College District  
500 Court St, Martinez, CA 94553

Email: [jesprit@4cd.edu](mailto:jesprit@4cd.edu).

Any bid received after the scheduled closing time for receipt of bids shall be returned to the bidder unopened. It is each bidder's sole responsibility to ensure its bid is timely delivered and received at the location designated as specified above.

**END OF ADDENDUM #1**

## SECTION 13710

### ACCESS CONTROL & ALARM MONITORING SYSTEM

#### PART 1 - GENERAL

##### 1.1 SUMMARY

- A. General: Furnish engineering, labor, materials, apparatus, tools, equipment, transportation, temporary construction and special or occasional services as required to make a complete working Access Control & Alarm Monitoring system installation, as described in these specifications.
- B. Section Includes:
  - 1. ACAMS control panels, input/output modules, and card readers
  - 2. ACAMS wireless card reader interface modules
  - 3. ACAMS power supplies
- C. Products Installed But Not Supplied Under This Section:
  - 1. Electric feed-through power transfer hinges
  - 2. Electrified locking hardware cable and termination to transfer hinge and security system
  - 3. Wireless card readers with integrated electronically controlled locking hardware
- D. Products Furnished and Installed Under another Section:
  - 1. Conduit, junction boxes
  - 2. 120 VAC Power
  - 3. Network connectivity for ACAMS devices via Owner's local/wide area network
- E. Alternates:
  - 1. ALT-13710-01: Men's Locker Room
    - a. Submit price to provide an ACAMS for the Men's Locker Room, as indicated on the drawings
    - b. Provide programming, commissioning, and training for the ACAMS
    - c. Furnish engineering, labor, material, apparatus, tools, and equipment required to provide a fully functioning ACAMS.
  - 2. ALT-13710-02: Women's Locker Room
    - a. Submit price to provide an ACAMS for the Women's Locker Room, as indicated on the drawings
    - b. Provide programming, commissioning, and training for the ACAMS
    - c. Furnish engineering, labor, material, apparatus, tools, and equipment required to provide a fully functioning ACAMS.

3. ALT-13710-03: District-wide Access Control System Server
  - a. Submit price to provide an ACAMS host server with associated software to support the control panels indicated on the drawings. Locate ACAMS host server at the District Office.
  - b. Provide setup, programming, commissioning, and training for the ACAMS server. This shall include the migration of the existing access control database into the new ACAMS server, allowing the system to continue to function.
  - c. Furnish engineering, labor, material, apparatus, tools, and equipment required to provide a fully functioning ACAMS host server.
4. ALT-13710-04: ACAMS Security Workstation
  - a. Submit price to provide an ACAMS security workstation with associated software to support the ACAMS as indicated on the drawings. Locate ACAMS security workstation in the CCC security office.
  - b. Provide setup, programming, commissioning, and training for the ACAMS security workstation
  - c. Furnish engineering, labor, material, apparatus, tools, and equipment required to provide a fully functioning ACAMS security workstation.
5. ALT-13710-05: Computer Technology Center, Automotive Technology, and Liberal Arts Building
  - a. Submit price to provide wireless card readers for the additional doors, as indicated on the drawings
  - b. Provide programming, commissioning, and training for the ACAMS
  - c. Furnish engineering, labor, material, apparatus, tools, and equipment required to provide a fully functioning ACAMS.

F. Related Sections:

1. Consult other Divisions, determine the extent and character of related work and properly coordinate work specified herein with that specified elsewhere to produce a complete and operable system.
2. Section 08710 – Door Hardware: for wireless card reader with integrated locking hardware product requirements.
3. Section 13700 – Basic Security Requirements: for submittal formats, warranty, general product requirements, and installation requirements.
4. Section 13770 – Security System Cabling: for cable requirements related to the ACAMS.
5. Section 13780 – Security System Labeling: for device labeling requirements.
6. Section 13790 – Security System Acceptance Testing: for testing requirements.

## 1.2 SYSTEM DESCRIPTION

### A. Overview

1. The ACAMS is a distributed network of control panels connected to and programmed from a host server and client workstation.
2. The ACAMS is utilized for electronically controlling after hours access to student, visitor, delivery personnel, and employee entrances to the buildings.

3. The ACAMS consists of a Software House C-Cure 9000 Server located in the District Office, control panels, card readers, battery powered wireless card readers with integrated locking hardware, and wireless interface modules. The host server communicates with the field panels via the Owner's local/wide area network.
- B. Base Bid - Access Control & Alarm Monitoring System
1. Provide a complete and functional ACAMS for the following buildings:
    - a. Art
    - b. Early Learning Center
    - c. Physical Science
    - d. John and Jean Knox Center for Performing Arts
    - e. Gym Annex
    - f. Gym
  2. Remove existing ACAMS controller and replace with new ACAMS controllers/power supplies that match campus standard on the following buildings. Utilize existing hardwired and wireless card readers, request-to-exit sensors, and security cabling. Confirm and document state of existing security equipment prior to control panel replacement.
    - a. Administrative and Applied Arts
    - b. Biological Science
    - c. Liberal Arts
    - d. Student Services Center
    - e. Library and Learning Center
    - f. Automotive Technology
    - g. Computer Technology Center
    - h. Health Science Building
  3. Utilize host server included in ALT-13710-03 connected to the Owner's local/wide area network.
  4. Provide ACAMS control panels as indicated on project drawings. Panels support up to 16 card readers with locking control outputs and multiple general purpose input/output modules for automation.
  5. Provide proximity wireless card readers with integrated locking hardware. Wireless readers are battery powered.
  6. Provide wireless interface modules as shown on the project drawings. Field determine the quantity and exact locations of the wireless interface modules for full coverage of wireless card readers.
  7. Provide wireless survey kit to verify wireless interface module placements.
  8. Provide hardwired card readers and interface to local lock power supplies as shown on the project drawings.
  9. Provide alarm contacts on hardwired card reader doors.
  10. Provide request-to-exit motion sensor on hardwired card reader doors.

11. Provide interface to hardwired card reader door lock power supplies.
  12. Provide battery backup of system headend components and power supplies.
  13. Provide control panel outputs to local lock power supplies used on hardwired locking hardware.
  14. Provide 500 proximity cards that match the existing district card format.
- C. ALT-13710-01: Men's Locker Room
1. Provide a complete and functional ACAMS for the Men's Locker Room.
  2. Provide control panels, wireless and hardwired card readers, interface modules, alarm contacts, request-to-exit sensors, power supplies, lock interfaces, and associated programming.
- D. ALT-13710-02: Women's Locker Room
1. Provide a complete and functional ACAMS for the Women's Locker Room.
  2. Provide control panels, wireless and hardwired card readers, interface modules, alarm contacts, request-to-exit sensors, power supplies, lock interfaces, and associated programming.
- E. ALT-13710-03: District-wide Access Control System Server
1. Provide a rack-mounted ACAMS host server with associated software to support the control panels indicated on the drawings.
  2. Locate ACAMS host server at the District Office. Coordinate exact location and connection to district-wide network with the District's IT Department.
  3. Coordinate network connectivity with the District's IT Department to communicate with ACAMS control panels located at CCC.
  4. Include the migration of the existing access control database into the new ACAMS server, allowing the system to continue to function.
- F. ALT-13710-04: ACAMS Security Workstation
1. Provide an ACAMS security workstation with associated software to support the ACAMS as indicated on the drawings.
  2. Locate ACAMS security workstation in the CCC security office. Coordinate exact location with CCC Police Services and CCC IT Department.
  3. Coordinate network connection with CCC IT Department.
- G. ALT-13710-05: Computer Technology Center, Automotive Technology, and Liberal Arts Building
1. Provide wireless card readers and associated programming for doors identified on drawings.
- H. Tamper Monitoring
1. Provide additional monitor input points for monitoring the following:
    - a. Tamper switches located within each security controller/equipment enclosure and wireway (use unsupervised inputs for this purpose).
    - b. Supervision of power supplies and batteries (use unsupervised inputs for this purpose).
    - c. Tamper switches located within each door junction box.

- I. Addendum #1 - Access Control & Alarm Monitoring System (District Office)
  1. Survey the access control system functionality of existing card reader doors and document the status prior to performing control panel demo work. Confirm and document the state of existing security equipment prior to control panel replacement and provide a list of non-functioning locations to the Owner.
  2. Demo existing ACAMS controller and provide new ACAMS controllers/power supplies that match the campus standard. Utilize existing hardwired and wireless card readers, request-to-exit sensors, and security cabling.
  3. Utilize host server connected to the Owner's local/wide area network.
  4. Provide ACAMS control panels as indicated on project drawings for the District Office Building. Panels support up to 16 card readers with locking control outputs and multiple general purpose input/output modules for automation.
  5. Utilize existing cabling to devices such as wireless modules, door contacts, and lock power supplies.
  6. Provide battery backup for ACAMS control panels and new power supplies.
  7. Provide control panel outputs to lock power supplies used on existing hardwired locking hardware.

### **1.3 SUBMITTALS**

- A. Contractor Qualifications: Submit certification letters for the manufacturer of the ACAMS.
- B. Product Data: Submit product information for components specified herein.
- C. Shop Drawings:
  1. Device placement on floor plans
  2. Point-to-Point Diagrams: Include wiring, points of connection and interconnecting devices between the following:
    - a. ACAMS control panel
    - b. ACAMS card reader and input/output modules
    - c. ACAMS power supplies
    - d. Wireless Card Reader interface modules
    - e. Interface to electrified door hardware
    - f. Cable conductors (identify conductors on the point-to-point diagrams with the same tag as the installed conductor)
  3. Schedules: Provide schedules for ACAMS control panels that show each point ID with a description of the connected devices.
  4. Block Diagram/Riser Diagram: Show the ACAMS components, conduit, wire types, and sizes between them, including cabling interties between termination hardware.
  5. Custom mounting details

## **PART 2 - PRODUCTS**

### **2.1 MANUFACTURERS**

- A. Access Control & Alarm Monitoring System
  - 1. Software House (to match campus standard)

## **2.2 ACAMS CONTROLLERS**

- A. General
  - 1. An intelligent controller with integrated battery backup, database, and communication ports that supports up to 16 card readers.
  - 2. Supports multiple communication channels to which a variety of devices can connect.
  - 3. Supports hardware modules used for additional memory and/or for future feature enhancements.
  - 4. Functions provided include:
    - a. Central control for attached devices and addressable modules
    - b. Makes decisions for access
    - c. Responds to monitor activity
    - d. Receives input to control its decision making
    - e. Reports activity to other devices
- B. Features
  - 1. Supports HID proximity, MIFARE, and DESFire card reader formats
  - 2. Supports flash upgrades for firmware updates
  - 3. Utilizes an onboard Ethernet NIC
  - 4. Global input/output and anti-passback functionality
  - 5. Capable of utilizing keypad commands to activate/deactivate events
- C. Supports RS-485 connectivity to addressable modules:
  - 1. Input Module: Supports 8 Class A supervised input points
  - 2. Output Module: Supports 8 Form C dry contact relays
- D. Manufacturer
  - 1. Software House iSTAR PRO 64MB control panel.
- E. Accessories
  - 1. Software House #I8; Input Module
  - 2. Software House #R8; Output Module
  - 3. Schlage PI400-485; Panel Interface Module

## **2.3 CARD READERS (HARD-WIRED)**

- A. General
  - 1. Presenting an access card to the reader initiates a single transmission to the ACAMS controller.
  - 2. Rugged, weatherized polycarbonate enclosure, designed to withstand an operating temperatures of -22 to 120 degrees Fahrenheit (-30 to 65 degrees Celsius) and operating humidity of 5-95% non-condensing.

3. Utilizes a Wiegand protocol for communication for compatibility with standard access control systems.
4. Utilizes a multi-color LED and an audible sounder to indicate the status of the door.
5. Utilizes an internal tamper switch that will indicate an alarm condition if an unauthorized attempt is made to disassemble the unit.

**B. Manufacturer**

1. HID # multiCLASS series
  - a. Wall mount: HID # RP40 multi-technology card reader
  - b. Mullion style: HID # RP15 multi-technology card reader
2. Schlage Multi-Technology Readers
  - a. Wall mount: Schlage # SXF1500 multi-technology card reader
  - b. Mullion style: #SXF1100 multi-technology card reader
3. Or Equal

**2.4 ACCESS CARDS**

**A. General**

1. Utilizes a graphics quality surface that supports direct-to-card printing.
2. Capable of being produced with holograms, ultra-violet fluorescent inks, or other anti-counterfeiting features.

**B. Manufacturer**

1. HID # 1386 ISOProx II proximity card, Corporate 1000 Program; verify card format with College in writing prior to ordering.

**2.5 WIREWAYS**

**A. General:**

1. Provide screw cover wireway sections with open top assembly as shown on Security drawings.
2. Provide closure plates to secure end of wireway sections.

**B. Screw Cover Gutter Wireways**

1. Type: NEMA type 1 enclosure
2. Size: 4" x 4" x 48" minimum
3. Finish: ANSI 61 gray polyester powder paint finish inside and out
4. Manufacturer:
  - a. Copper B-Line # 4448-G-NK lay-in painted wireway without knockouts
  - b. Hoffman # F44T148GVP lay-in painted wireway without knockouts
  - c. Or Equal
5. Accessories:
  - a. Cooper B-Line # 44-E-NK closure plate without knockouts
  - b. Hoffman # A44GCPNK closure plate without knockouts

c. Or Equal

## **2.6 ACAMS POWER SUPPLIES**

### **A. General**

1. Provides a 120VAC to 12 and 24VDC output, fully supervised power supply to power ACAMS field devices.
2. Utilizes 16 PTC Class 2 rated power limited outputs.
3. Short circuit and thermal overload protection.
4. Integrated charger for sealed lead acid or gel type batteries.
5. Capable of providing a 10 amp supply current.
6. Supports a fire alarm disconnect to relay that individually selects any or all of the 16 outputs.

### **B. Manufacturer**

1. Altronix # AL600ULXPD16 power supply
2. Or Equal

## **2.7 BATTERIES**

### **A. General:**

1. Voltage: 12.00
2. Amps: 12.00
3. Chemistry: SLA or VRLA valve regulated
4. Termination: Spade protected terminals

### **B. Manufacturer:**

1. Yuasa #RE12-12 sealed lead acid 12V 12Ah battery
2. Interstate Batteries #SLA1105 sealed lead acid 12V 12Ah battery
3. Or Equal

## **2.8 ACAMS SERVER & COMPONENTS - ALT-13710-03**

### **A. ACAMS Server**

1. Document the cost of this hardware at time of bid due to price reductions and advancements in technology. Prior to placement of order, provide upgrades to the most current model as requested by the Owner up to the cost of the specified system.
2. Provide complete prepackaged unit containing:
  - a. Processor: Dual-core Intel Xeon 5130, 4MB Cache
  - b. Memory: 4GB 533MHz (4x1GB), Dual Ranked DIMMs
  - c. Hard Drive: Minimum of four 73 GB, SAS 15K RPM hard drives
  - d. OS: Windows Server 2003 Standard Edition or latest version compatible with the ACAMS software
  - e. 48x IDE CD-RW/DVD ROM drive

- f. Network Adapter: Dual embedded gigabit Ethernet NIC
  - g. Chassis Configuration: Rack chassis with sliding rails and cable management arm
3. Manufacturer
    - a. Dell # PowerEdge R710 series server
    - b. Or Approved Equal
  4. ACAMS Software
    - a. Include software licenses:
      - 1) Card reader licenses to support a minimum of 128 card reader capacity
      - 2) Client software licenses to support 40 concurrent users
      - 3) Includes 2 ID Badging software clients
      - 4) IDS integration
  5. Manufacturer
    - a. Software House C-Cure 9000 bundled system #CC9000B/P-R
- B. KVM Console with Integrated LCD Monitor, Keyboard, Mouse
1. Features
    - a. 17" LCD monitor, 1280 x 1024 resolution minimum
    - b. Trackball or touchpad mouse
    - c. Rack mount chassis in a 1U sliding tray
  2. Provide cables required for connection to ACAMS and other rack mountable security devices.
  3. Manufacturer
    - a. Rose Electronics #RV1-CKVT17/U
    - b. Or Approved Equal
- C. Uninterrupted Power Supply
1. General
    - a. Suitable for installation within an telecommunications room and for a 19" rack mounted installation
    - b. Voltage compatibility: 120VAC
    - c. Sized to support a rack of head-end security equipment located in the DVR Room
    - d. Refer to Specification Section 28 23 00 Video Surveillance System for specific UPS requirements

**2.9 ACAMS SECURITY WORKSTATION & COMPONENTS - ALT-13710-04**

- A. ACAMS Security Workstation
1. Document the cost of this hardware at time of bid due to price reductions and advancements in technology. Prior to placement of order, provide upgrades to the most current model as requested by the Owner up to the cost of the specified product.
  2. Provide complete prepackaged unit containing:

- a. Processor: Intel Core i7 Quad Core 870 2.93GHz, 8M L3Cache
  - b. Memory: 4GB, 1333MHz FSB, DDR3 SDRAM, Non-ECC (2 DIMMS)
  - c. Video Card: Dual 512MB, dual monitor compatible for support for up to 4 monitors
  - d. Monitors: Two 22" widescreen monitors, 1920x1080 resolution, with digital video inputs
  - e. Hard Drive: 250GB SATA, 7200 RPM and 8MB DataBurst Cache
  - f. OS: Microsoft Windows 7 Professional, or latest OS supported by manufacturer
  - g. Optical Drive: 16xDVD-RW
  - h. Network Adapter: Gigabit Ethernet NIC
3. Manufacturer
- a. Dell # OptiPlex 980 series workstation
    - 1) Dell # USB Multimedia Pro keyboard
    - 2) Dell # USB optical mouse
  - b. Or Approved Equal
- B. ACAMS Software
- 1. Include software licenses: Badging software license
  - 2. Manufacturer
    - a. Software House # C-Cure 9000 client software
- C. UPS:
- 1. Provide one UPS for each workstation furnished.
  - 2. APC or equal by BEST for backup of one CPU and two monitors. Connect UPS alarm condition output relay to security system. Provide smart software interface with UPS and operating system to facilitate automatic shut-down. Provide a separate UPS for each required workstation.

## **PART 3 - EXECUTION**

### **3.1 INSTALLATION**

- A. ACAMS Server - ALT-13710-03
  - 1. Rack mount server in existing District Office equipment rack, located in downtown Martinez, CA. Coordinate exact room and rack location with District's IT Department.
  - 2. Provide extension cords, and line extenders if required, for keyboards, monitors, mice, etc. to connect to rack-mounted console.
  - 3. Install MS Windows Server, SQL database, and necessary client access licenses.
  - 4. Install ACAMS software and setup communication with control panels and workstations.
- B. ACAMS Control Panels
  - 1. Place power supply and associated hardware in same location.
  - 2. Power ACAMS Control panels from power supply.

3. Install supervisory and end-of-line (EOL) resistors as required. Refer to Section 13700 – Basic Security Requirements for EOL supervision requirements.
  4. Utilize existing 120VAC power at each location when replacing an existing unit. Replace plug-in type cable and receptacle with a hard-wired power connection as indicated on the drawings.
  5. Coordinate network connectivity with Owner's IT department prior to installation.
  6. Notify the Owner if the control panel interfaces existing devices that do not properly function.
- C. Wireless Interface Module
1. Field determine best location for wireless card reader interface module. Locate module above accessible ceiling, whenever possible to avoid damage to units.
  2. Connect wireless interface module to ACAMS panel using the RS-485 data bus.
- D. Remote Reader Modules
1. Locate remote reader module in accessible ceiling space unless otherwise noted on the project drawings.
  2. Power remove reader modules from power supply located at centralized security hub.
- E. Card Readers
1. Wire the card reader's multi-color LED to indicate the following status of the door.
    - a. Red status indicates the door is secure (locked).
    - b. Green status indicates the door is unsecured (unlocked).
    - c. Yellow status indicates the card reader is not functioning (off-line/trouble), is processing a read request, or has denied access.
  2. The card reader to produce an audible beep tone to indicate to the user:
    - a. The card was read and/or access was denied.
    - b. Door is being held open and needs to be closed.
- F. Door Hardware
1. Setup and conduct a door hardware coordination meeting.
  2. Coordinate the installation and termination of the security cable with the installation of the hardwired electric door hardware and transfer hinge.
  3. Coordinate connection between wireless interface module and card readers with integrated locking hardware with door hardware installer. Program wireless card readers into the ACAMS.

### **3.2 PROGRAMMING**

- A. Prior to the completion of construction, schedule a meeting with the Owner to determine the programming criteria. Discuss the following:
1. Access card levels and door groupings
  2. Alarm priority levels
  3. Schedules and time codes
  4. Holidays and holiday types (priorities)
  5. Action/responses from individual input points

6. Standard and custom (expanded) reports
  7. Defining alarm messages and standard response messages applicable to site
  8. Routing of alarm points to selected pagers
  9. Routing of alarm points to operator's workstations, printers, and history files
  10. Coordinate implementation of graphics with Owner. Develop sample graphic complete with icons and text. Alarms to appear on building floor plans depicting the nature and location of alarms. Review and revise graphic layout as required by Owner.
  11. System data base backup to CD-ROM
- B. Document the results of the meeting and perform necessary programming to achieve the Owner's requests. Include assisting the College with setting up authorized users and groups for each building within the project scope.
- C. System Operation, Alarm and Reporting Function: Program door control panel tamper switches to immediately reported as a separate "tamper" point to the system resulting in an alarm condition displayed in both text and graphic form on the applicable workstation(s) and an alarm message transmitted to the appropriate pager(s).
- D. Receive CAD drawing files of floor plans and perform the following relative to system graphics:
1. Delete non-applicable drawing layers and details to arrive at simple floor plans of the building as built.
  2. Convert drawings to a graphic file format compatible with the Owner's access control and alarm monitoring system.
  3. Load drawing files into the system.
  4. Apply new and predefined icons and other points on each graphic to indicate point and control status.
  5. Link graphic images to reader, monitor and control points.
- E. Program routing of monitor and control points. Route activations and restore messages to one or more of the following locations as directed by the Owner's Representative:
1. One or more system workstations;
  2. One or more system printers;
  3. One or more alphanumeric pagers;
  4. History files in addition to the above;
  5. History files only.
- F. Program the system such that reliance on a remote host for routine building operations, such as scheduled door commands and conditional events, are minimized to the greatest extent possible and decisions are made at the local building controller.
- G. Program the system in a manner that minimizes the amount of time required for the users to make updates and maintain the system on a daily basis especially updates that impact card holder record updates. Nested programs, such as reader groupings used in access codes shall be used to the greatest extent possible such that single actions are required to update an entire card data population. If there is a question regarding the appropriate approach to programming, given the flexibility of most systems, contact the Engineer prior to any initial programming

- H. Complete other programming as required for system operation.
- I. Program and setup the system such that no additional programming other than entering new access cards is required. Include setup of available features of the software.
- J. Use the point names provided on the system point schedule.
- K. Perform 2 full system back-ups at completion of initial programming and deliver one copy to owner with letter of Transmittal explaining information included in back-up and brief description of recovery procedures. Label the second CD-ROM and store onsite. Perform back-ups on a regular bases through the remainder of the project.
- L. Customize menus with the assistance of the factory to "gray-out" features not used on project (such as elevator control).
- M. Coordinate physical or VPN access to the existing access control server located a the District Office with the College for programming and support.
- N. Perform field software changes after the initial programming session to "fine tune" operating parameters and sequence of operations based on revised operating requirements.

### 3.3 TESTING

- A. Commission ACAMS in accordance with Section 13790.

**END OF SECTION 13710**

SECURITY TITLE SHEET

CONTRA COSTA COMMUNITY COLLEGE

CONVENTIONS

NOT ALL SYMBOLS MAY BE USED

SECURITY

NOT ALL SYMBOLS MAY BE USED

GENERAL NOTES

APPLIES TO ALL SHEETS

DRAWING INDEX

ISSUE LOG

- Electrical sheet note, General contractor sheet note, Mechanical contractor sheet note, Security sheet note, Telcom sheet note, Owner sheet note, Conduit identification tag, Numbered sheet note, Equipment identification tag, Door number, Signal conduit bank tag, Photo reference, Detail reference, Elevation reference, Security device ID reference.

- Card reader, Electric mortise lock, Electric strike, Electric exit device, Door operator, Transfer hinge, REX motion detector, Power supply, Magnetic door contact, Security/CCTV equipment cabinet, Security door junction box, Life safety system interface relay, Wireless panel interface module.

- 1. REFER TO WRITTEN SPECIFICATIONS FOR PROJECT SCOPE, GENERAL REQUIREMENTS, PRODUCT SPECS, AND INSTALLATION REQUIREMENTS. 2. DRAWINGS INDICATE APPROXIMATE LOCATIONS OF CEILING MOUNTED DEVICES... 3. MOUNTING HEIGHTS SHOWN ARE FROM FINISHED FLOOR TO THE CENTERLINE OF THE DEVICE... 4. ELECTRICAL MATERIALS AND EQUIPMENT SHALL BE LISTED BY UNDERWRITERS LABORATORIES AND BEAR THEIR LABEL, UON.

Table with columns: SHEET NUMBER, SHEET TITLE, and ISSUE LOG. Lists various sheets like SY0.01, SY0.02, SY1.01, SY2.01, etc.

ISSUE LOG KEY table with columns: DATE, and rows for 'X' (ISSUED AS PART OF A SET) and '-' (NOT A PART OF ISSUED SET).

PATHWAYS

NOT ALL SYMBOLS MAY BE USED

- Underground telecommunication conduit duct bank, Conduit run exposed on wall or ceiling, Conduit run concealed in slab, Conduit run concealed in wall or ceiling, Conduit homerun, Flexible metallic conduit, Multi-outlet surface raceway, Cable tray types, Main J-hanger cable routing pathway, Conduit stub through wall or floor, 'EZ-PATH' type firestop assembly.

POWER & LIGHTING

NOT ALL SYMBOLS MAY BE USED

- Electrical panelboard, Duplex convenience outlet, Double duplex convenience outlet, Specially outlet, Floor mounted fourplex power receptacle, Furniture power or raceway feed point, Floor mounted junction box, Junction box, Wall mounted junction box, Single pole toggle switch, Telecommunications grounding bus, Power pole with separate power and communication feeds, Fluorescent striplight fixture, Shading of any fixture indicates connection to emergency system.

ABBREVIATIONS

NOT ALL ABBREV. MAY BE USED

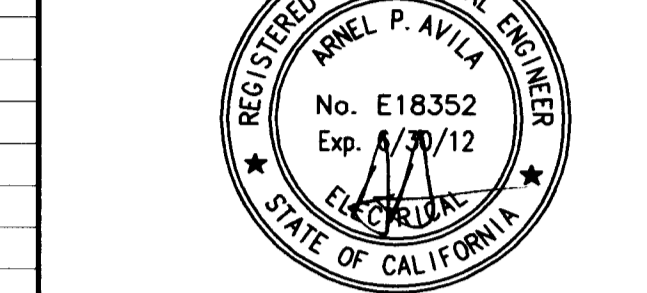
Table of abbreviations including ACAMS, AFF, AWG, BDF, C, CAT3, CAT5E, CAT6, CATV, CEC, DIV, (E), EC, EMS, EMT, (F), FACP, FATC, FO, GC, IDF, IDS, JB, MDF, MH, MM, MPOE, MT, N, NC, NO, NTS, OC, OSP, (P), PB, PNL, PR, PVC, REX, SAD, SEC, SM, SCTP, STR, STP, TBB, TBC, TGB, TMGB, TYP, UON, UPS, UTP, V, WP, XFMR, OUTSIDE PLANT, PROTECTED SIDE OF DOOR, PULL BOX, PANEL, PAIR (OF COPPER CONDUCTORS), POLYVINYL CHLORIDE, REQUEST TO EXIT, SEE ARCHITECTURAL DRAWINGS, SECURITY EQUIPMENT CABINET, SINGLEMODE OPTICAL FIBER, SCREENED TWISTED PAIR, STRAND(S) OF FIBER, SHIELDED TWISTED PAIR, TELECOM BONDING BACKBONE, TELECOM BONDING CONDUCTOR, TELECOM GROUNDING BUSBAR, TELECOM MAIN GROUNDING BUSBAR, TYPICAL, UNLESS OTHERWISE NOTED, UNINTERRUPTIBLE POWER SUPPLY, UNSHIELDED TWISTED PAIR, VOLTS, WEATHERPROOF, TRANSFORMER.

ACCESS CONTROL SYSTEM UPGRADE

CONSULTANT



SEAL AND SIGNATURE



CONFIDENTIALITY: TEECOM Design Group has undertaken considerable measures to protect the confidentiality of its proprietary information. This document contains information that is the confidential and proprietary property of TEECOM Design Group and may not be copied, published, or disclosed to others, or used for any other purpose than review by consent.

GENERAL NOTES

CONTRA COSTA COMMUNITY COLLEGE C-523 ACCESS CONTROL SYSTEM UPGRADE AT CONTRA COSTA COLLEGE 2600 MISSION BELL DRIVE SAN PABLO, CA 94806

APPROVED DIV OF THE STATE ARCHITECT APPLNO. 21-112357 DATE 1-27-2011

REVISIONS table with columns for description and date.

SYMBOLS LIST AND DRAWING INDEX

ISSUANCE DSA SUBMITTAL

SCALE NONE

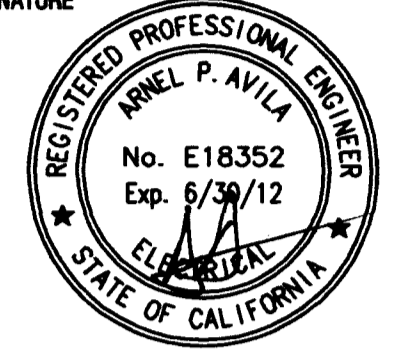
DRAWN BY AG, CHECKED BY AA, PROJECT NO 09169, DATE 10.24.11, SHEET NUMBER AD1-SV0.01

CONSULTANT



1333 Broadway  
Suite 401  
Oakland, CA 94612  
916.337.8800  
www.teecom.com

SEAL AND SIGNATURE



**CONFIDENTIALITY**  
TEECOM Design Group has undertaken considerable measures to protect the confidentiality of its proprietary information. This document contains information that is the confidential and proprietary property of TEECOM Design Group and may not be copied, published, or disclosed to others, or used for any other purpose than review by consent, without the express written consent of an authorized officer of TEECOM Design Group. This document must be kept in a file designated as "TEECOM Design Group" and kept confidential when not being reviewed as result of consent.

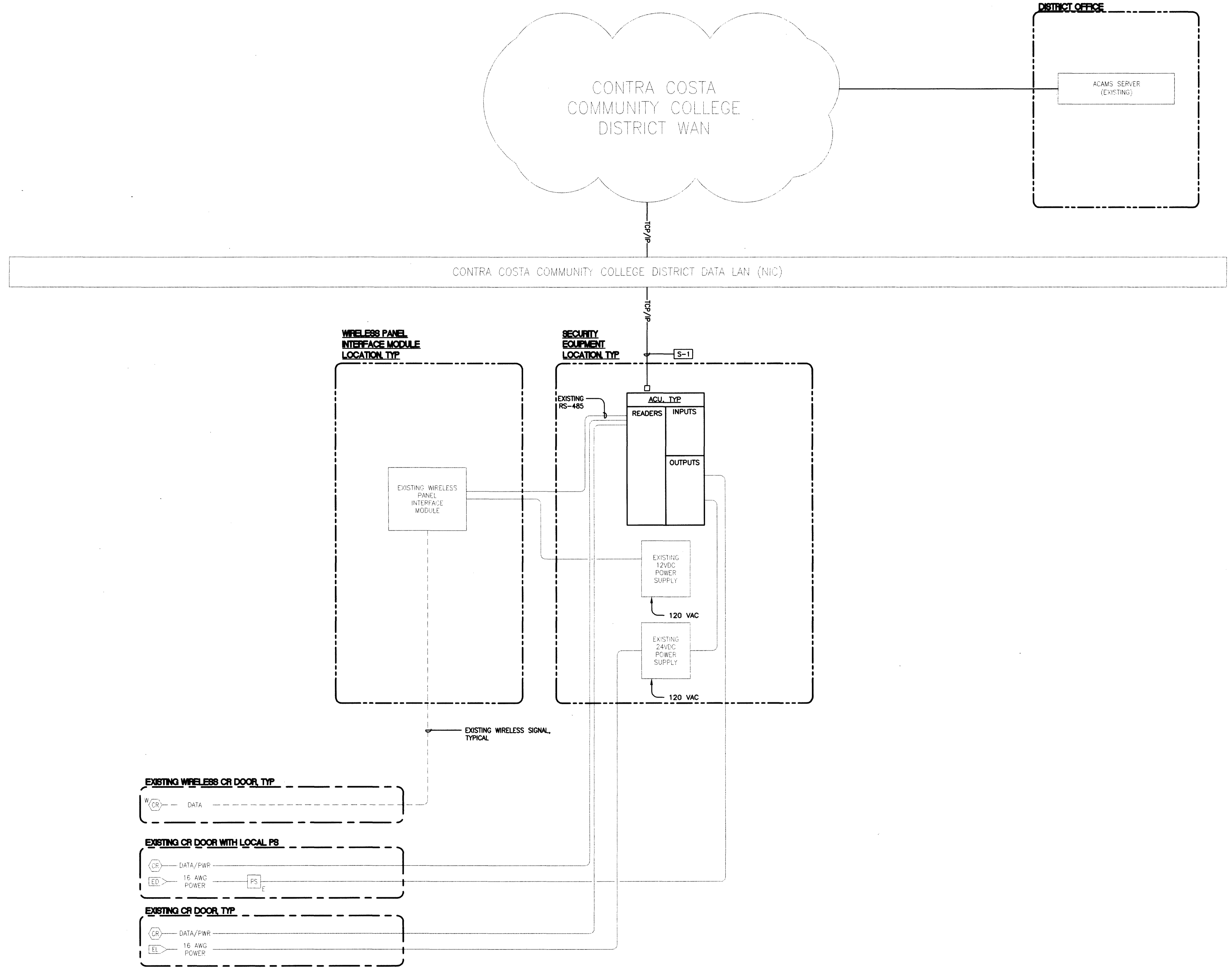
Copyright 1997-2011 TEECOM Design Group. All Rights Reserved.  
GENERAL NOTES

**GENERAL SHEET NOTES**

- COORDINATE TCP/IP ADDRESS FOR ACAMS CONTROL PANEL AND SECURITY WORKSTATION WITH COLLEGE IT DEPARTMENT REPRESENTATIVE.
- ACAMS BLOCK DIAGRAM IS DIAGRAMMATIC ONLY. PROVIDE ACU PANELS AND POWER SUPPLIES TO SUPPORT FILED DEVICES SHOWN ON FLOOR PLANS.
- REFER TO FLOOR PLANS FOR LOCATION OF EXISTING CONTROL PANEL EQUIPMENT.

**NUMBERED SHEET NOTES**

**SECURITY:**  
S-1 PROVIDE DATA CABLE TO EXISTING NETWORK EQUIPMENT. COORDINATE TERMINATION AND PORT REQUIREMENTS WITH COLLEGE IT DEPARTMENT.



CONTRA COSTA COMMUNITY COLLEGE  
C-523 ACCESS CONTROL SYSTEM UPGRADE  
AT CONTRA COSTA COLLEGE  
2600 MISSION BELL DRIVE  
SAN PABLO, CA 94806

NOT FOR DSA REVIEW. ONLY FOR DISTRICT OFFICE.

APPROVED  
DIV OF THE STATE ARCHITECT  
ACS X FLS SSS  
APPL NO. 2-112357 DATE 1-27-12

| REVISIONS | DATE |
|-----------|------|
|           |      |
|           |      |
|           |      |
|           |      |
|           |      |
|           |      |
|           |      |
|           |      |
|           |      |

ADDITIONUM 1  
SHEET TITLE  
**BLOCK DIAGRAM - ACAMS - DISTRICT OFFICE**

ISSUANCE  
DSA SUBMITTAL

SCALE  
NONE

|                     |                                   |
|---------------------|-----------------------------------|
| DRAWN BY<br>AG      | SHEET NUMBER<br><b>AD1-SY0.12</b> |
| CHECKED BY<br>AA    |                                   |
| PROJECT NO<br>09169 |                                   |
| DATE<br>10.24.11    |                                   |

**GENERAL SHEET NOTES**

1. SECURITY DEVICES SHOWN ON THIS SHEET ARE EXISTING, UON. NO CHANGE TO EXISTING DOORS AND HARDWARE.
2. FIELD DETERMINE EXACT LOCATION OF CARD READERS FOR FINAL PROGRAMMING.

**CONTRA COSTA COMMUNITY COLLEGE**

ACCESS CONTROL SYSTEM UPGRADE

CONSULTANT



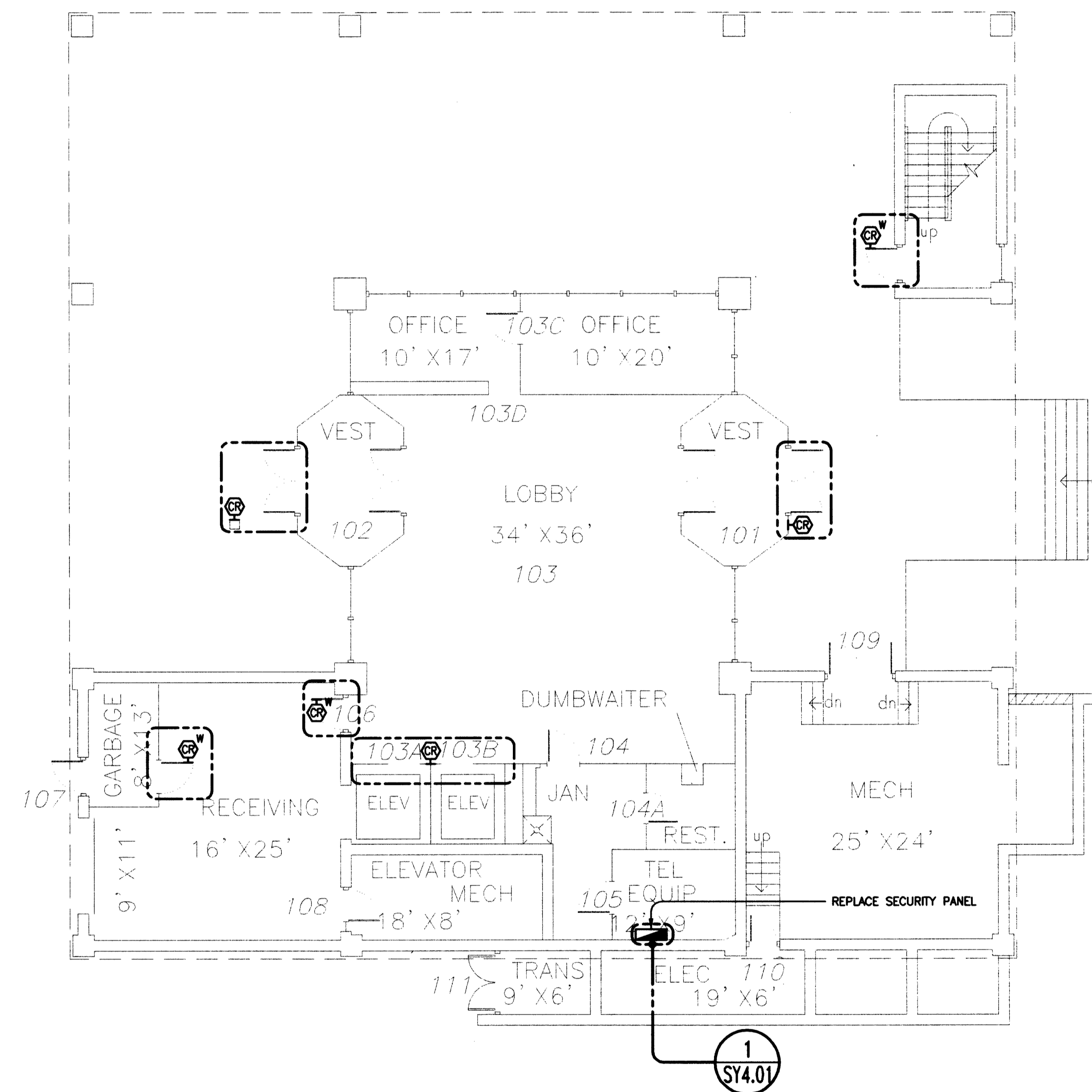
1333 Broadway  
Suite 607  
Oakland, CA 94612  
916.337.2000  
www.teecom.com

SEAL AND SIGNATURE



**CONFIDENTIALITY**  
TEECOM Design Group has undertaken considerable measures to protect the confidentiality of its proprietary information. This document contains information that is the confidential and proprietary property of TEECOM Design Group and may not be copied, published, or disclosed to others, or used for any other purpose than review by consent, without the express written consent of an authorized officer of TEECOM Design Group. This document must be kept in a file designated as "TEECOM Design Group" and kept confidential when not being reviewed as result of consent.

COPYRIGHT 1987-2011 TEECOM Design Group. ALL RIGHTS RESERVED.  
GENERAL NOTES



**CONTRA COSTA COMMUNITY COLLEGE**  
**C-523 ACCESS CONTROL SYSTEM UPGRADE**  
**AT CONTRA COSTA COLLEGE**  
**2600 MISSION BELL DRIVE**  
**SAN PABLO, CA 94806**

NOT FOR DSA REVIEW. ONLY FOR DISTRICT OFFICE.

APPROVED  
DIV OF THE STATE ARCHITECT  
ACS 2/1/11 PLS SSS  
APPL NO. 21-1123571 DATE JAN 27 2011

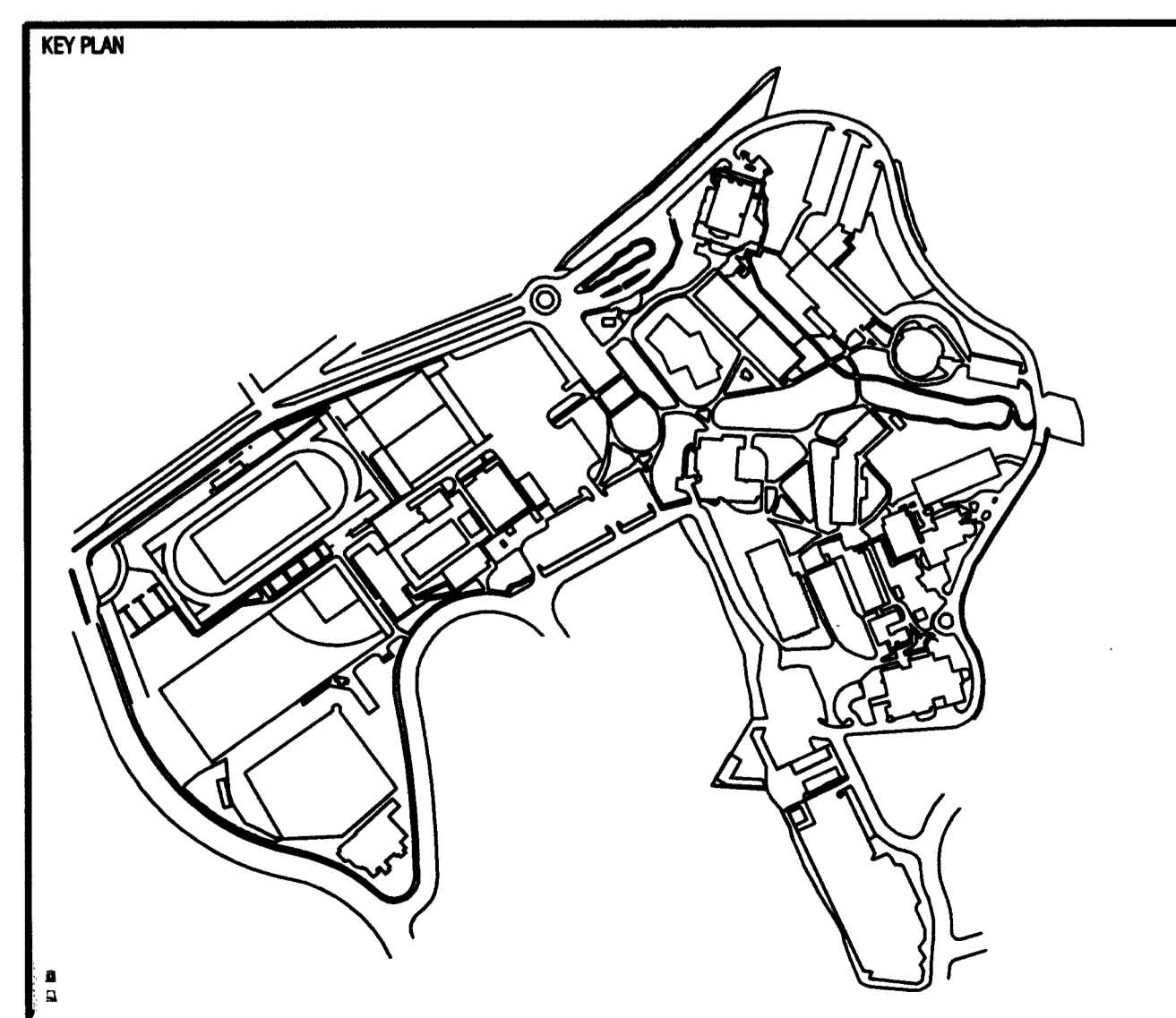
| REVISIONS | DATE | BY |
|-----------|------|----|
|           |      |    |
|           |      |    |
|           |      |    |
|           |      |    |
|           |      |    |
|           |      |    |
|           |      |    |
|           |      |    |
|           |      |    |

ADDENDUM 1 1/27/11  
SHEET TITLE  
**FLOOR PLAN LEVEL 1 - DISTRICT OFFICE**

ISSUANCE  
DSA SUBMITTAL

SCALE  
AS NOTED

|                     |                                   |
|---------------------|-----------------------------------|
| DRAWN BY<br>AG      | SHEET NUMBER<br><b>AD1-SY2.21</b> |
| CHECKED BY<br>AA    |                                   |
| PROJECT NO<br>09169 |                                   |
| DATE<br>10.24.11    |                                   |



**GENERAL SHEET NOTES**

1. SECURITY DEVICES SHOWN ON THIS SHEET ARE EXISTING, UON. NO CHANGE TO EXISTING DOORS AND HARDWARE.
2. FIELD DETERMINE EXACT LOCATION OF CARD READERS FOR FINAL PROGRAMMING.
3. EXISTING OR DOOR CONNECTS TO PANEL ON LEVEL 1.

**CONTRA COSTA COMMUNITY COLLEGE**

ACCESS CONTROL SYSTEM UPGRADE

CONSULTANT



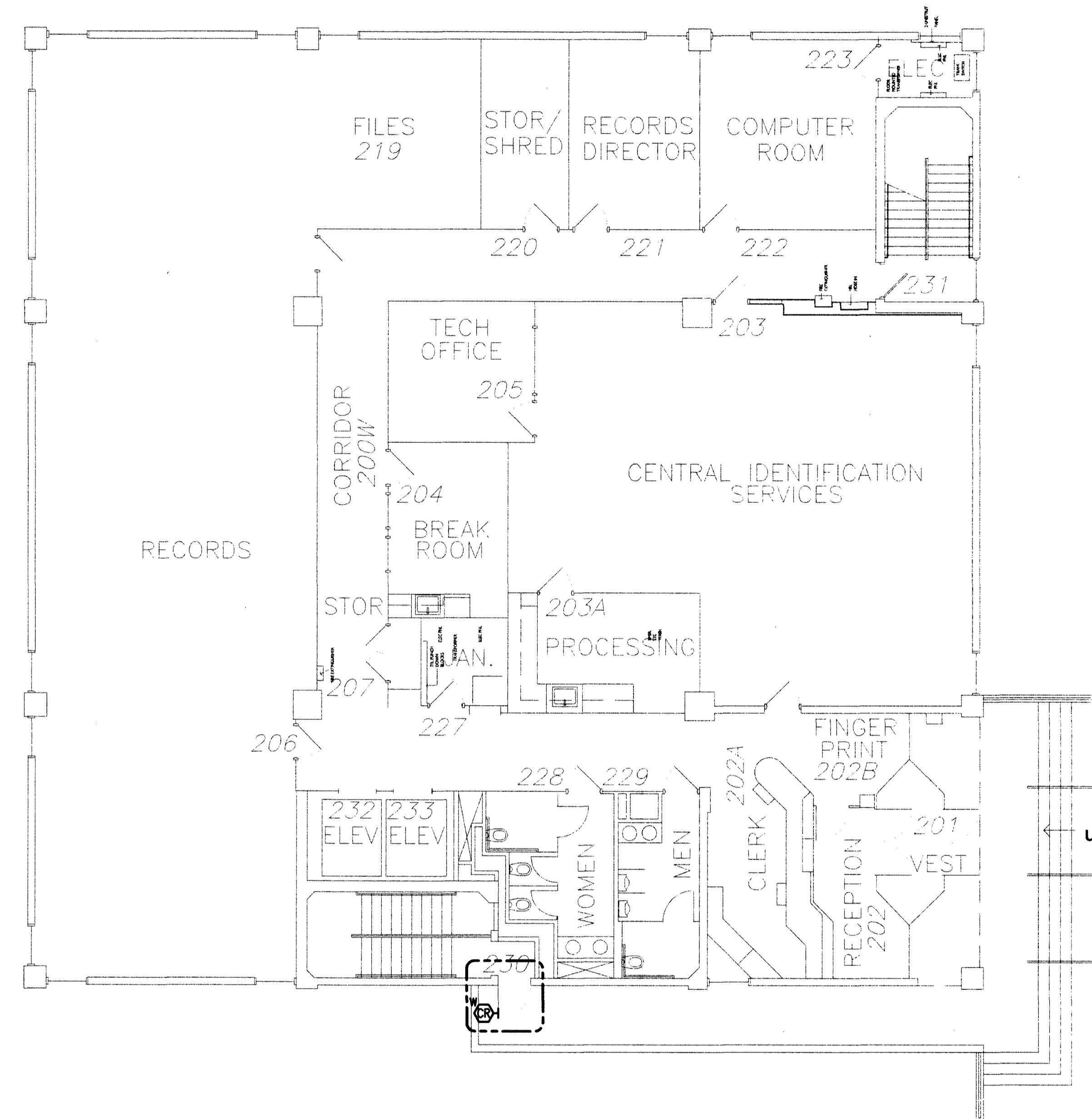
1533 Broadway  
Suite 401  
Oakland, CA 94612  
510.337.2800  
www.teecom.com

SEAL AND SIGNATURE



**CONFIDENTIALITY**  
TEECOM Design Group has undertaken considerable measures to protect the confidentiality of its proprietary information. This document contains information that is the confidential and proprietary property of TEECOM Design Group and may not be copied, published, or disclosed to others, or used for any other purpose than review by consent, without the express written consent of an authorized officer of TEECOM Design Group. This document must be kept in a file designated as "TEECOM Design Group" and kept confidential when not being reviewed as result of consent.

COPYRIGHT 1987-2011 TEECOM Design Group, ALL RIGHTS RESERVED.  
GENERAL NOTES



**CONTRA COSTA COMMUNITY COLLEGE  
C-523 ACCESS CONTROL SYSTEM UPGRADE  
AT CONTRA COSTA COLLEGE  
2600 MISSION BELL DRIVE  
SAN PABLO, CA 94806**

NOT FOR DSA REVIEW. ONLY FOR DISTRICT OFFICE.

APPROVED  
DIV OF THE STATE ARCHITECT  
ACS # \_\_\_\_\_ FLS # \_\_\_\_\_ SSS # \_\_\_\_\_  
APPL. NO. 21-112357, DATE JAN 27 2012

REVISIONS

| NO. | DESCRIPTION | DATE |
|-----|-------------|------|
|     |             |      |
|     |             |      |
|     |             |      |
|     |             |      |
|     |             |      |
|     |             |      |
|     |             |      |
|     |             |      |
|     |             |      |

ADDITIONAL 1, 27, 2012  
SHEET TITLE  
**FLOOR PLAN LEVEL 2 - DISTRICT OFFICE**

ISSUANCE  
DSA SUBMITTAL

SCALE  
AS NOTED

DRAWN BY  
AG

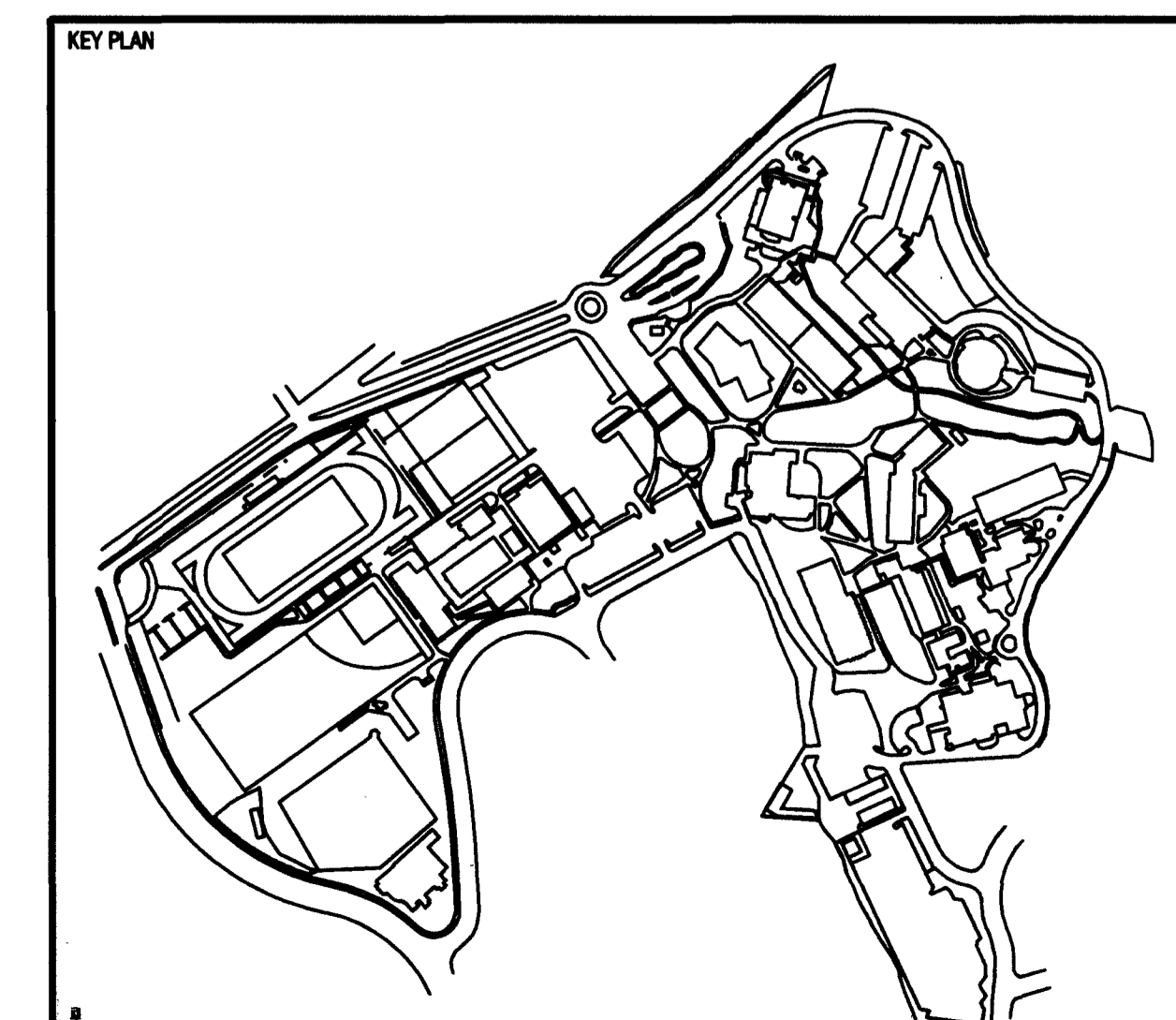
CHECKED BY  
AA

PROJECT NO  
09169

DATE  
10.24.11

SHEET NUMBER

AD1-SY2.22



**GENERAL SHEET NOTES**

1. SECURITY DEVICES SHOWN ON THIS SHEET ARE EXISTING, UNL. NO CHANGE TO EXISTING DOORS AND HARDWARE.
2. FIELD DETERMINE EXACT LOCATION OF CARD READERS FOR FINAL PROGRAMMING.
3. EXISTING OR DOOR CONNECTS TO PANEL ON LEVEL 1.

**CONTRA COSTA COMMUNITY COLLEGE**

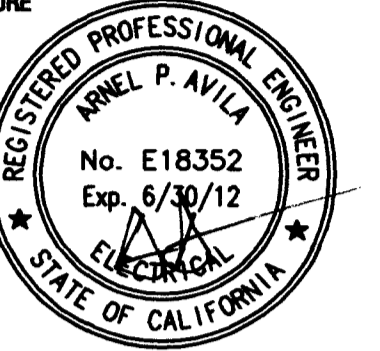
ACCESS CONTROL SYSTEM UPGRADE

CONSULTANT



1330 Broadway  
Suite 201  
Oakland, CA 94612  
916.337.8833  
www.teecom.com

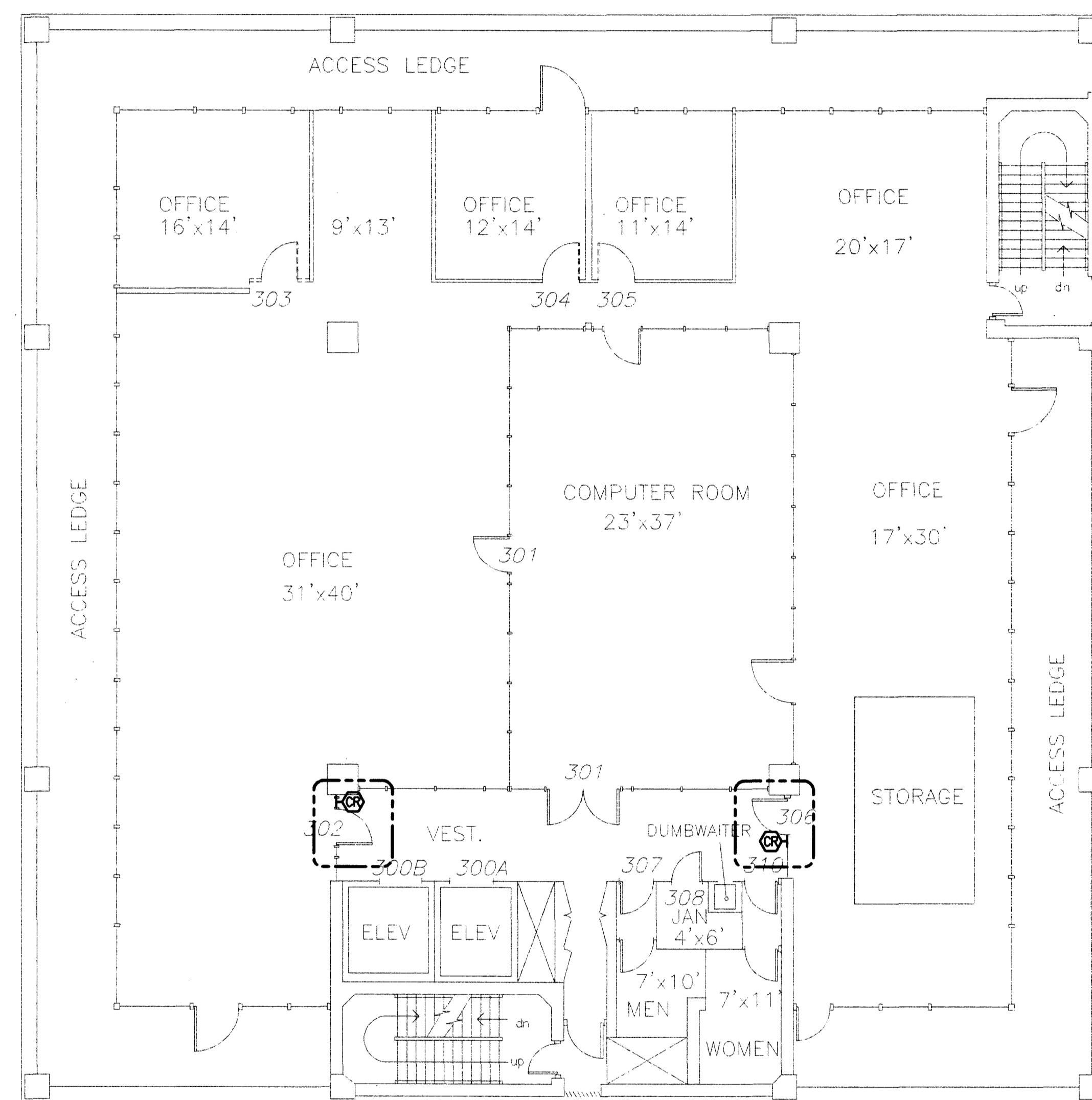
SEAL AND SIGNATURE



**CONFIDENTIALITY**  
TEECOM Design Group has undertaken considerable measures to protect the confidentiality of its proprietary information. This document contains information that is the confidential and proprietary property of TEECOM Design Group and may not be copied, published, or disclosed to others, or used for any other purpose than review by consent, without the express written consent of an authorized officer of TEECOM Design Group. This document must be kept in a file designated as "TEECOM Design Group" and kept confidential when not being reviewed as result of consent.

COPYRIGHT 1987-2011 TEECOM Design Group. ALL RIGHTS RESERVED.

GENERAL NOTES



CONTRA COSTA COMMUNITY COLLEGE  
C-523 ACCESS CONTROL SYSTEM UPGRADE  
AT CONTRA COSTA COLLEGE  
2600 MISSION BELL DRIVE  
SAN PABLO, CA 94806

NOT FOR DSA REVIEW. ONLY FOR DISTRICT OFFICE.

APPROVED  
DIV OF THE STATE ARCHITECT  
ACS: W FLS: SSS  
APPL. NO. 21-112357 DATE: JAN 27 2012

REVISIONS

| NO. | DESCRIPTION | DATE |
|-----|-------------|------|
|     |             |      |
|     |             |      |
|     |             |      |
|     |             |      |
|     |             |      |
|     |             |      |
|     |             |      |
|     |             |      |
|     |             |      |

ADDENDUM 1 1/27/12

SHEET TITLE  
FLOOR PLAN LEVEL 3 - DISTRICT OFFICE

ISSUANCE  
DSA SUBMITTAL

SCALE  
AS NOTED

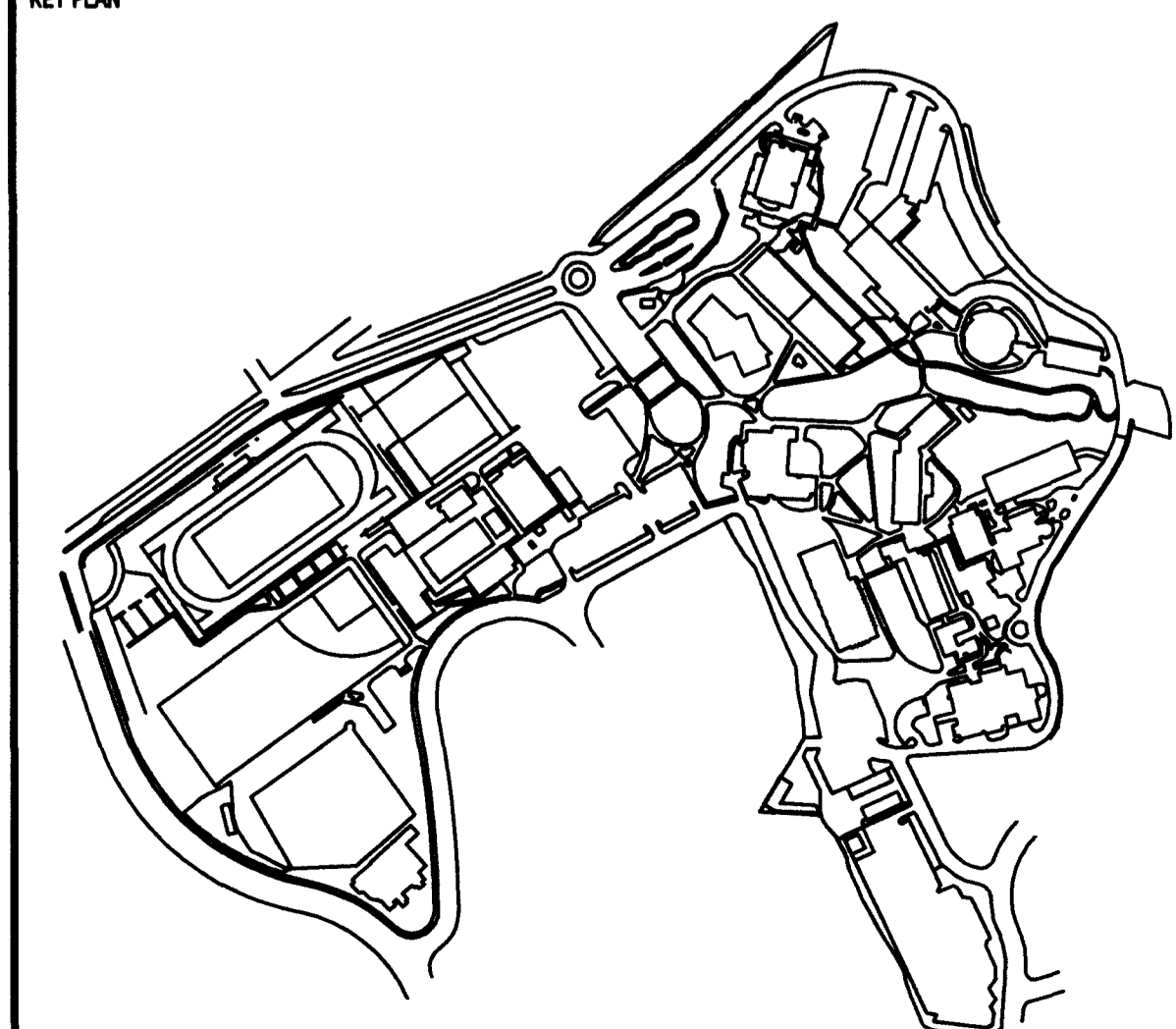
DRAWN BY  
AG SHEET NUMBER

CHECKED BY  
AA

PROJECT NO  
09169

DATE  
10.24.11

KEY PLAN



AD1-SY2.23

**GENERAL SHEET NOTES**

- SECURITY DEVICES SHOWN ON THIS SHEET ARE EXISTING, UON. NO CHANGE TO EXISTING DOORS AND HARDWARE.
- FIELD DETERMINE EXACT LOCATION OF CARD READERS FOR FINAL PROGRAMMING.
- EXISTING CR DOOR CONNECTS TO PANEL ON LEVEL 1.

**CONTRA COSTA COMMUNITY COLLEGE**

ACCESS CONTROL SYSTEM UPGRADE

CONSULTANT

**TEECOM**

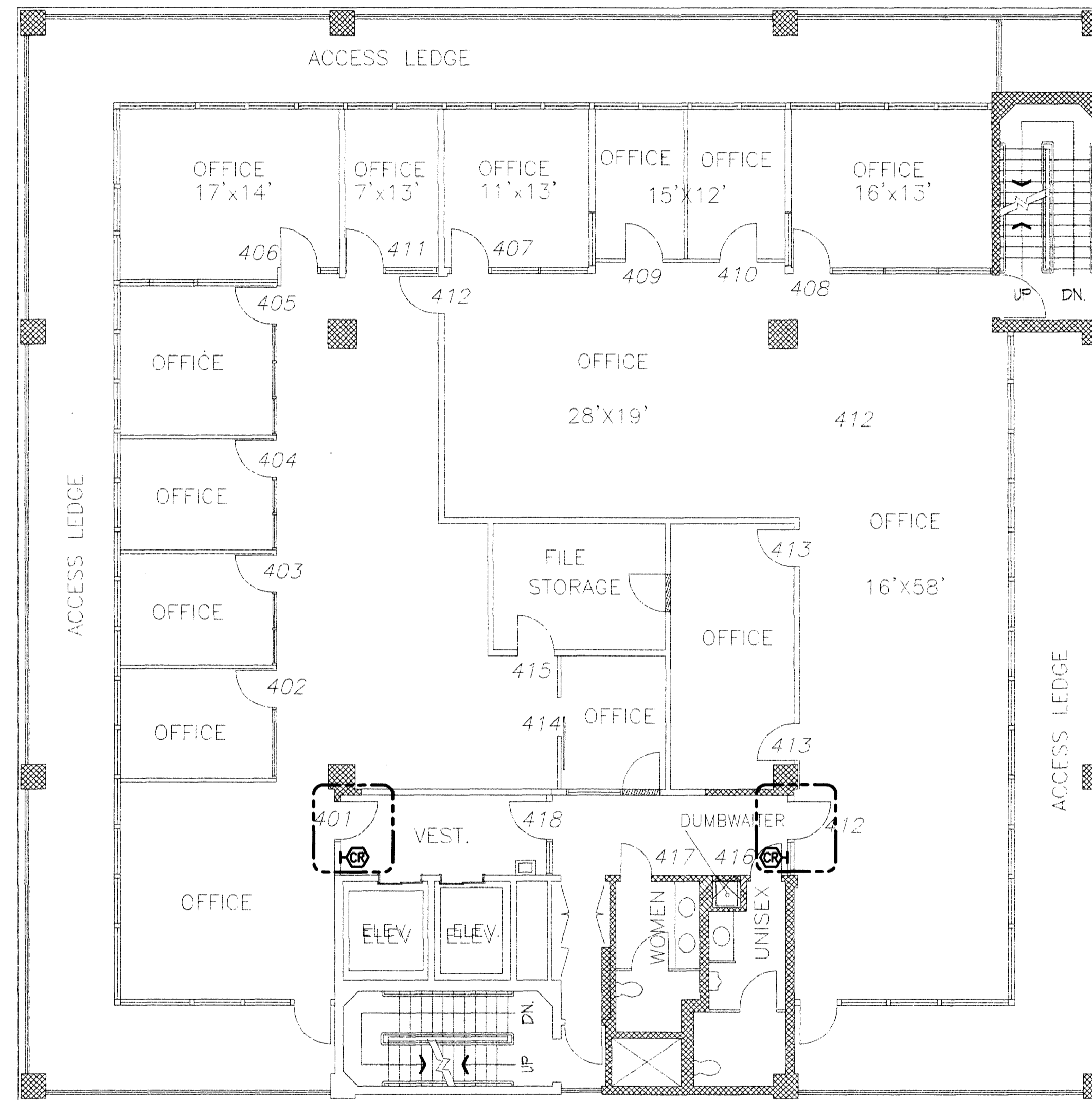
1333 Broadway  
Suite 201  
Oakland, CA 94612  
510.337.2620  
www.teecom.com

SEAL AND SIGNATURE

REGISTERED PROFESSIONAL ARCHITECT  
LUCAS P. AVILA  
No. E18352  
Exp. 5/30/12  
STATE OF CALIFORNIA

**CONFIDENTIALITY**  
TEECOM Design Group has undertaken considerable measures to protect the confidentiality of its proprietary information. This document contains information that is the confidential and proprietary property of TEECOM Design Group and may not be copied, published, or disclosed to others, or used for any other purpose than review by consent, without the express written consent of an authorized officer of TEECOM Design Group. This document must be kept in a file designated as "TEECOM Design Group" and kept confidential when not being reviewed as result of consent.

COPYRIGHT 1987-2011 TEECOM Design Group. ALL RIGHTS RESERVED.  
GENERAL NOTES



CONTRA COSTA COMMUNITY COLLEGE  
C-523 ACCESS CONTROL SYSTEM UPGRADE  
AT CONTRA COSTA COLLEGE  
2600 MISSION BELL DRIVE  
SAN PABLO, CA 94806

NOT FOR DSA REVIEW. ONLY FOR DISTRICT OFFICE.

APPROVED  
DIV OF THE STATE ARCHITECT  
ACS: AG FLS: SSS  
APPL NO: 112357 DATE: JAN 27 2012

REVISIONS

| NO. | DESCRIPTION | DATE |
|-----|-------------|------|
|     |             |      |
|     |             |      |
|     |             |      |
|     |             |      |
|     |             |      |
|     |             |      |
|     |             |      |
|     |             |      |
|     |             |      |
|     |             |      |

ADDENDUM 1 1/27/2012

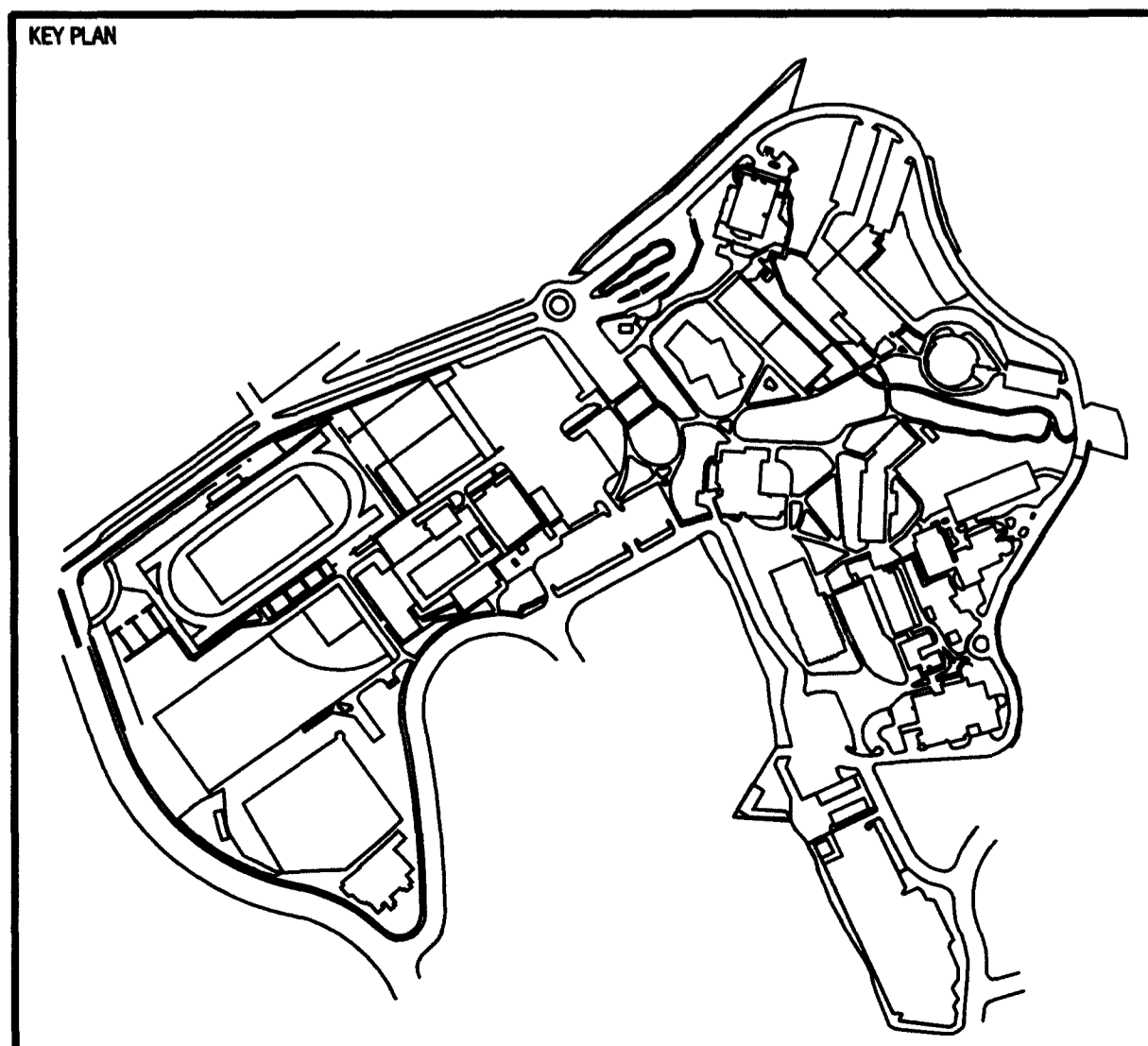
SHEET TITLE  
FLOOR PLAN LEVEL 4 - DISTRICT OFFICE

ISSUANCE  
DSA SUBMITTAL

SCALE AS NOTED

DRAWN BY: AG  
CHECKED BY: AA  
PROJECT NO: 09169  
DATE: 10.24.11

SHEET NUMBER  
**AD1-SY2.24**



**GENERAL SHEET NOTES**

1. NO SECURITY DEVICES ON THIS SHEET.

**CONTRA COSTA  
COMMUNITY COLLEGE**

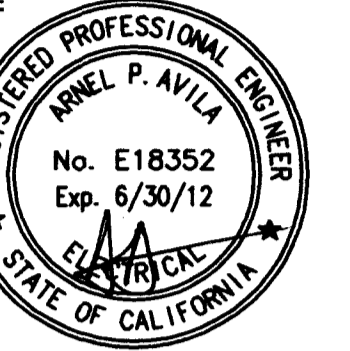
ACCESS CONTROL  
SYSTEM UPGRADE

CONSULTANT



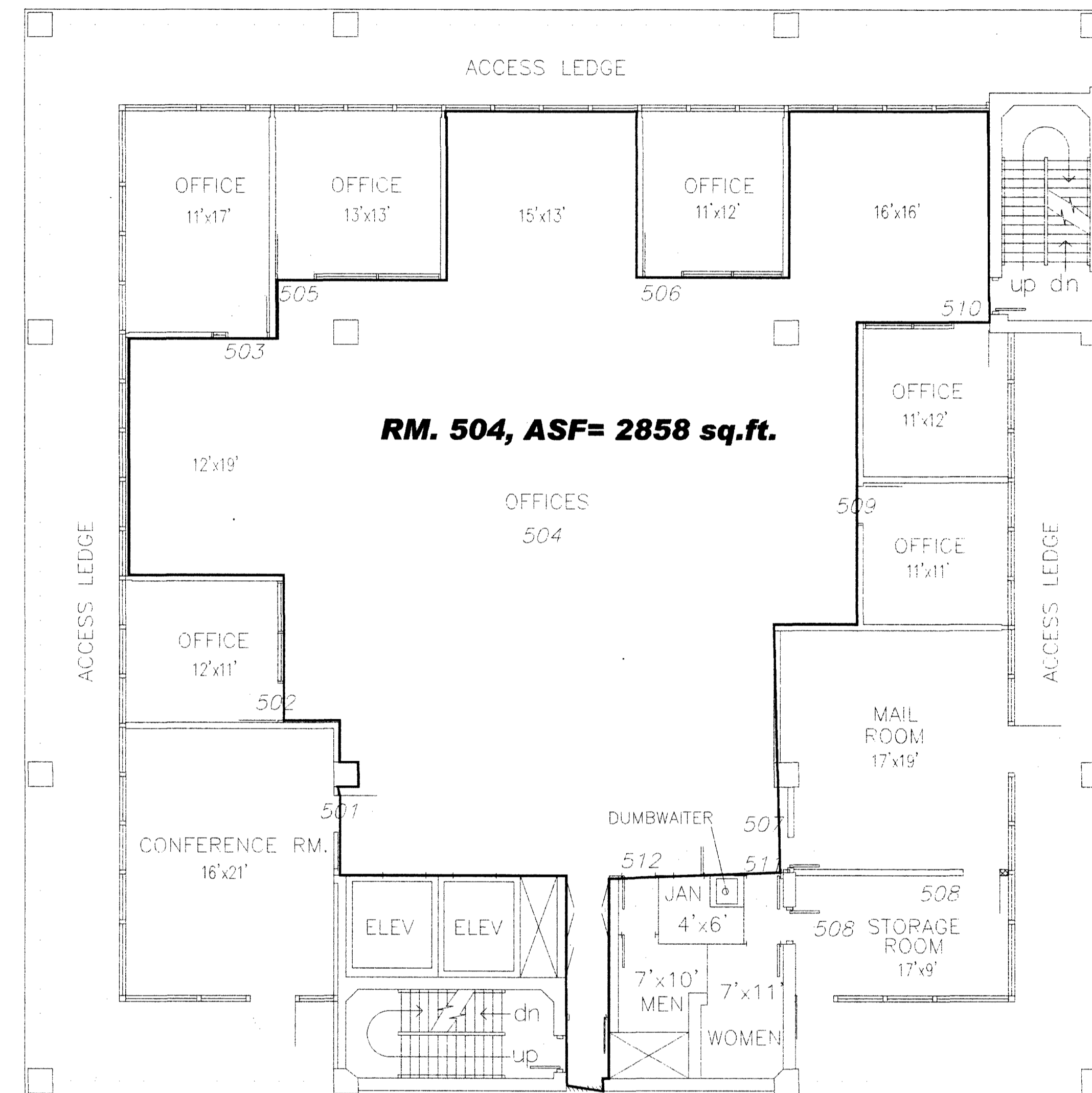
1333 Broadway  
Suite 401  
Oakland, CA 94612  
916.337.8800  
www.teecom.com

SEAL AND SIGNATURE



**CONFIDENTIALITY**  
TEECOM Design Group has undertaken considerable measures to protect the confidentiality of its proprietary information. This document contains information that is the confidential and proprietary property of TEECOM Design Group and may not be copied, published, or disclosed to others, or used for any other purpose than review by consent, without the express written consent of an authorized officer of TEECOM Design Group. This document must be kept in a file designated as "TEECOM Design Group" and kept confidential when not being reviewed as result of consent.

COPYRIGHT 1987-2011 TEECOM Design Group. ALL RIGHTS RESERVED.  
GENERAL NOTES



**CONTRA COSTA COMMUNITY COLLEGE  
C-523 ACCESS CONTROL SYSTEM UPGRADE  
AT CONTRA COSTA COLLEGE  
2600 MISSION BELL DRIVE  
SAN PABLO, CA 94806**

NOT FOR DSA REVIEW. ONLY FOR DISTRICT OFFICE.

APPROVED  
DIV OF THE STATE ARCHITECT  
ACS # \_\_\_\_\_ FLS # \_\_\_\_\_ SSS # \_\_\_\_\_  
APPL. NO. 01-12357 DATE JAN 27 2012

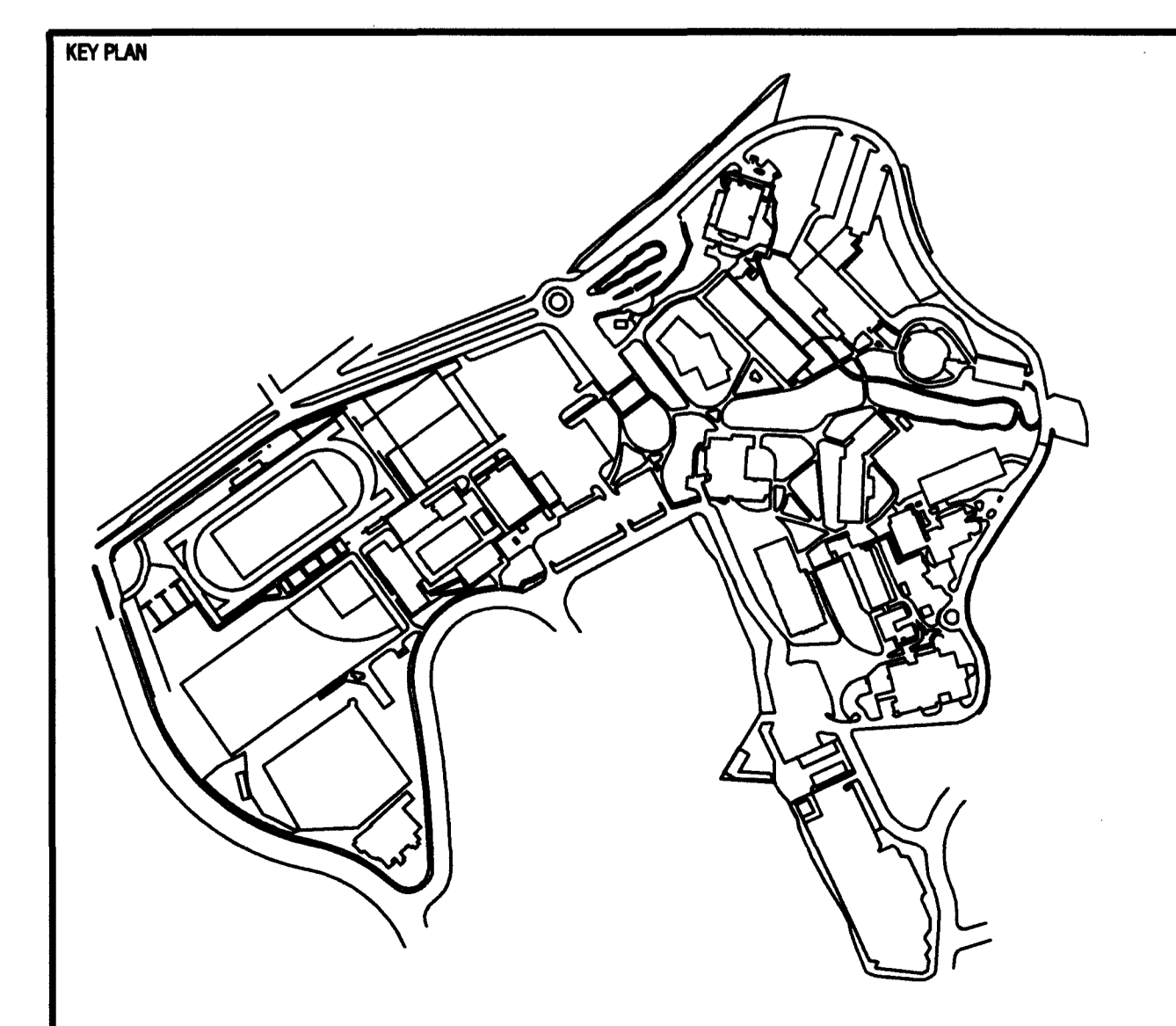
| REVISIONS | DATE |
|-----------|------|
|           |      |
|           |      |
|           |      |
|           |      |
|           |      |
|           |      |
|           |      |
|           |      |
|           |      |

ADDENDUM 1 1/27/2012  
SHEET TITLE  
**FLOOR PLAN LEVEL 5 -  
DISTRICT OFFICE**

ISSUANCE  
**DSA SUBMITTAL**

SCALE  
AS NOTED

|                     |                                   |
|---------------------|-----------------------------------|
| DRAWN BY<br>AG      | SHEET NUMBER<br><b>AD1-SY2.25</b> |
| CHECKED BY<br>AA    |                                   |
| PROJECT NO<br>09169 |                                   |
| DATE<br>10.24.11    |                                   |



**GENERAL SHEET NOTES**

1. NO SECURITY DEVICES ON THIS SHEET.

**CONTRA COSTA  
COMMUNITY COLLEGE**

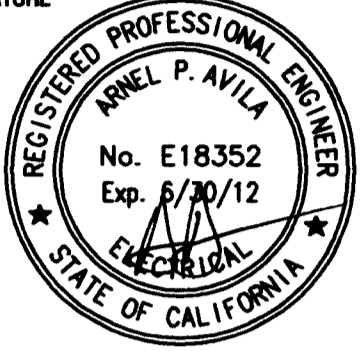
ACCESS CONTROL  
SYSTEM UPGRADE

CONSULTANT



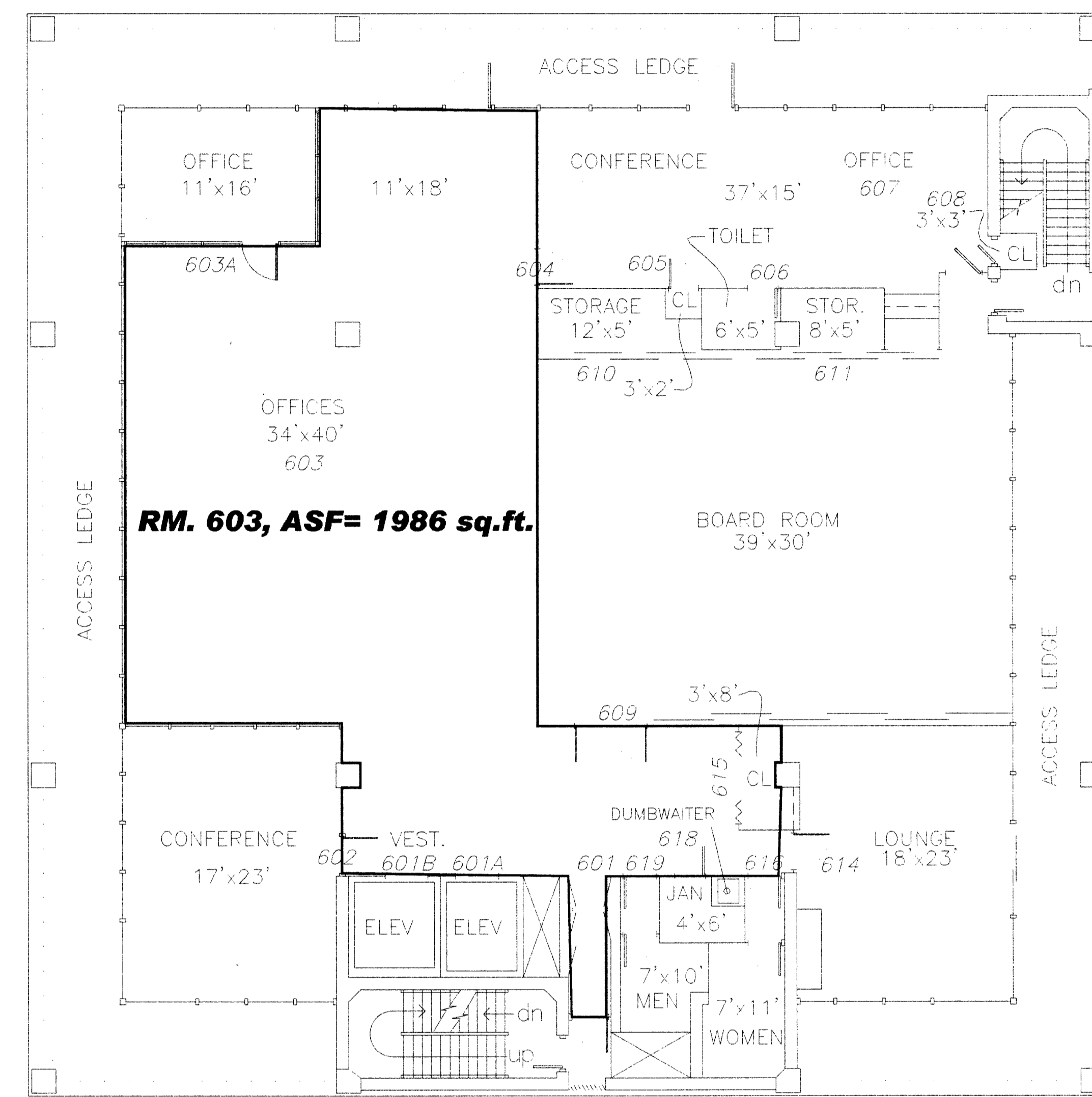
180 Broadway  
Suite 407  
Oakland, CA 94612  
510.370.2000  
www.teecom.com

SEAL AND SIGNATURE



**CONFIDENTIALITY**  
TEECOM Design Group has undertaken considerable measures to protect the confidentiality of its proprietary information. This document contains information that is the confidential and proprietary property of TEECOM Design Group and may not be copied, published, or disclosed to others, or used for any other purpose than review by consent, without the express written consent of an authorized officer of TEECOM Design Group. This document must be kept in a file designated as "TEECOM Design Group" and kept confidential when not being reviewed as result of consent.  
COPYRIGHT 1997-2011 TEECOM Design Group. ALL RIGHTS RESERVED.

GENERAL NOTES



**RM. 603, ASF= 1986 sq.ft.**

**CONTRA COSTA COMMUNITY COLLEGE  
C-523 ACCESS CONTROL SYSTEM UPGRADE  
AT CONTRA COSTA COLLEGE  
2600 MISSION BELL DRIVE  
SAN PABLO, CA 94806**

NOT FOR DSA REVIEW. ONLY FOR DISTRICT OFFICE.

APPROVED  
DIV OF THE STATE ARCHITECT  
ACS: W FLS: SSS  
APPL. NO. 01-112357 DATE JAN 27 2012

| REVISIONS | DATE |
|-----------|------|
|           |      |
|           |      |
|           |      |
|           |      |
|           |      |
|           |      |
|           |      |
|           |      |
|           |      |

ADDENDUM 1 1/27/2012  
SHEET TITLE  
**FLOOR PLAN LEVEL 6 -  
DISTRICT OFFICE**

ISSUANCE  
DSA SUBMITTAL

SCALE  
AS NOTED

DRAWN BY  
AG

CHECKED BY  
AA

PROJECT NO  
09169

DATE  
10.24.11

SHEET NUMBER  
**AD1-SY2.26**

