

HOOD INFORMATION TABLE

HOOD NUMBER	HOOD MODEL	EXHAUST CFM	EXHAUST AIR FLOW REQUIREMENTS			GREASE EXTRACTOR				HOOD CONSTRUCTION	HOOD WEIGHT (LBS)		
			T.A.B. PORT STATIC PRESSURE	TOTAL HOOD STATIC PRESSURE	EXHAUST COLLAR			TYPE					
					QTY.	LENGTH	WIDTH						
2-21	KVE	1142	.11"	.22"	1	12"	8"	5	20"	13"	KSA	ALL 18GA. 304 S.S.	687
-	-	-	-	-	-	-	-	-	-	-	-	-	-
-	-	-	-	-	-	-	-	-	-	-	-	-	-
-	-	-	-	-	-	-	-	-	-	-	-	-	-

TOTAL EXH. CFM = 1142

NOTE: FIRE SUPPRESSION SYSTEM SHALL BE A DEFERRED DSA SUBMITTAL

GENERAL SPECIFICATIONS

- HOOD CONSTRUCTION AND DESIGN MEETS NFPA 96 AND IMC 2003. SEE APPLICABLE CODES AND STANDARDS ON SHEET FS-101.
- HOOD IS NSF AND EITHER ETL OR UL LISTED UNDER THE FOLLOWING FILE NUMBERS:
ETL #3085193CLE-002
UL #MH12867
- ALL INSTALLATION WORK IS TO BE PERFORMED BY QUALIFIED PERSONS AND IN ACCORDANCE WITH STATE AND LOCAL BUILDING CODE REQUIREMENTS.
- THE INSTALLATION SHALL BE IN ACCORDANCE WITH NFPA 96, REMOVAL OF SMOKE AND GREASE LADEN VAPORS FROM COMMERCIAL COOKING EQUIPMENT.
- ALL EXHAUST DUCTWORK AND TRANSITIONS ARE TO BE PROVIDED BY THE HVAC CONTRACTOR.
- CLEARANCE FROM HOOD AND DUCTS TO COMBUSTIBLE MATERIAL SHALL BE PER APPLICABLE BUILDING CODES.
- FOR PROPER OPERATION OF THE HOOD SYSTEM, IT IS THE RESPONSIBILITY OF THE GENERAL CONTRACTOR TO HAVE THE HOOD BALANCED AND TESTED TO ENSURE THAT THE EXHAUST AND SUPPLY REQUIREMENTS OF THE HOOD ARE MET.

INSTALLATION REQUIREMENTS

KITCHEN EQUIPMENT CONTRACTOR'S REQUIREMENTS

- PROVIDE DRAWINGS TO APPROPRIATE TRADES REFERENCING UTILITY SERVICE AND COORDINATE FINAL CONNECTION.
- DELIVER, ASSEMBLE AND INSTALL HALTON SYSTEM PER DRAWING.
- FURNISH WIRING AND PLUMBING DIAGRAMS TO END USER.
- THE K.E.C. MUST INFORM HALTON OF ANY CHANGES IN EQUIPMENT OR BUILDING STRUCTURE. FIELD MODIFICATIONS ARE THE RESPONSIBILITY OF THE K.E.C.
- IF HALTON EXHAUST VOLUME DAMPERS ARE PROVIDED, THE K.E.C. IS RESPONSIBLE FOR THEIR INSTALLATION OR TO MAKE ARRANGEMENTS WITH OTHER TRADES FOR THEIR INSTALLATION.

ELECTRICAL CONTRACTOR'S REQUIREMENTS

- PROVIDE AND CONNECT ALL REQUIRED VOLTAGES, CONNECTORS, WIRING, CONDUIT, ETC., PER NEC AND ALL APPLICABLE LOCAL CODES.

ELECTRICAL EQUIPMENT REQUIREMENTS

- FLUORESCENT LIGHT FIXTURE
40 WATT MAX BULB= .7 AMP EA.
 - RECESSED INCANDESCENT LIGHT FIXTURE
150 WATT MAX BULB= 1.2 AMP EA.
 - GLOBE INCANDESCENT LIGHT FIXTURE
100 WATT MAX BULB= .7 AMP EA.
 - LED LIGHT FIXTURES= .30 AMP EA.
 - CAPTURE JET FAN= .5 AMP EA.
- **ALL HOOD CIRCUITS ARE NOT TO EXCEED 15 AMP**

CLIENT
DIABLO VALLEY COLLEGE
CONTRA COSTA COMMUNITY COLLEGE DISTRICT
321 Golf Club Road
Pleasant Hill, CA 94523

ARCHITECT
Steinberg Architects
98 Battery Street, Suite 300
San Francisco, CA 94111

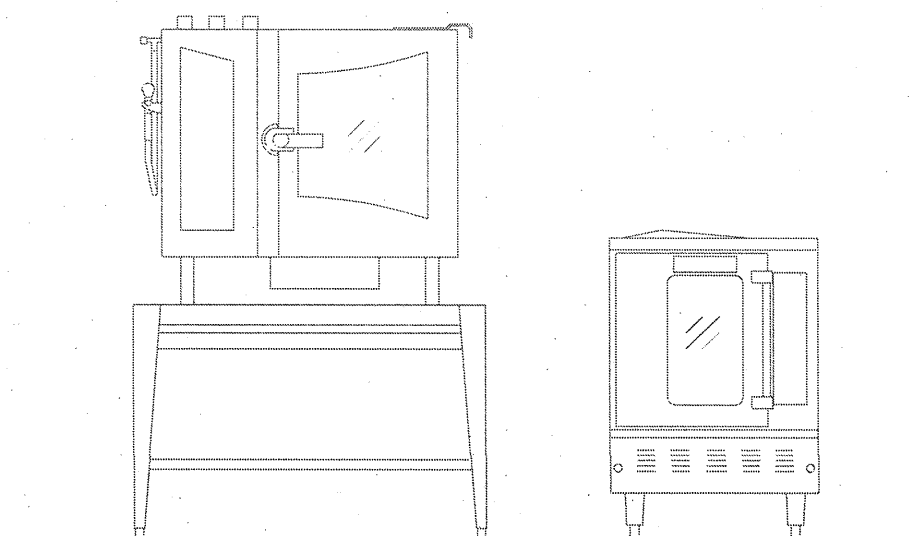
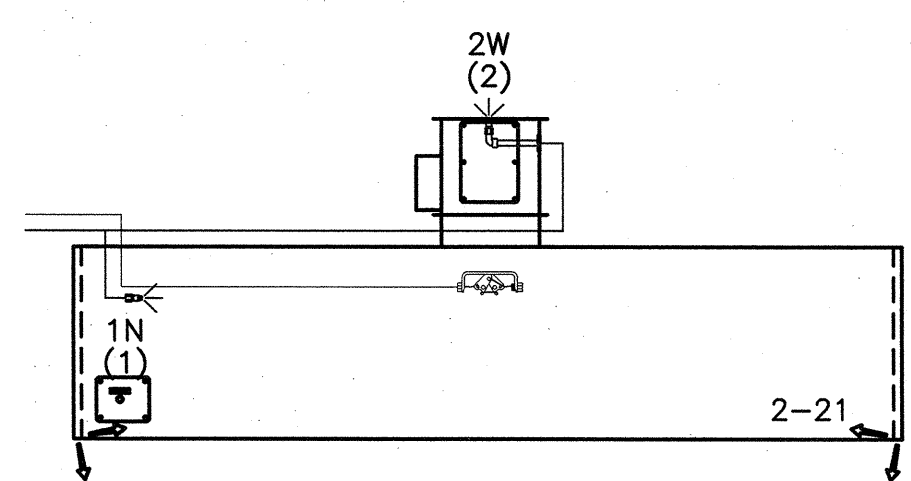
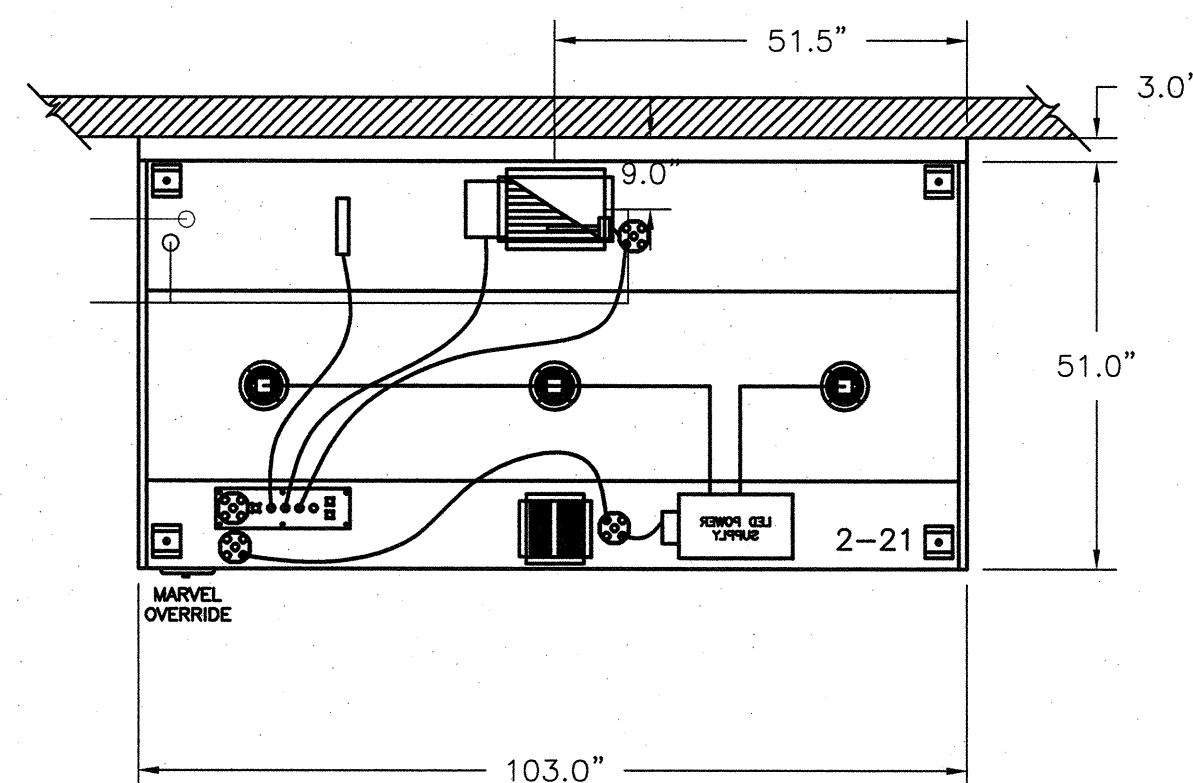
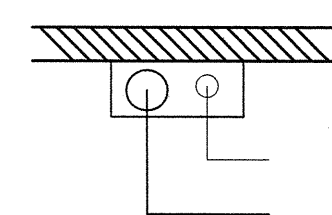
WEBB DESIGN

130 S. PROSPECT AVE. FOOD SERVICE DESIGN CONSULTANTS
TUSTIN, CA 92780
714.508.0010 FAX
714.508.1880

WEBB DESIGN © 1998

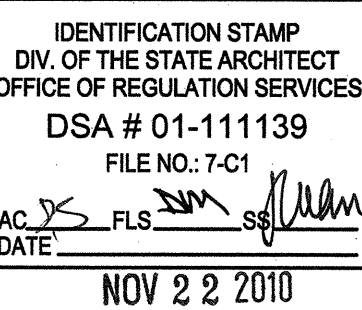
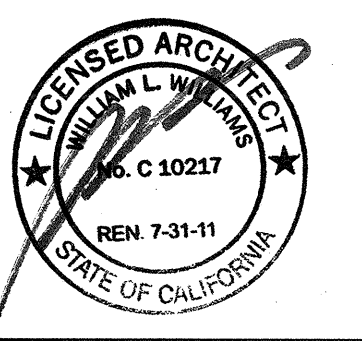
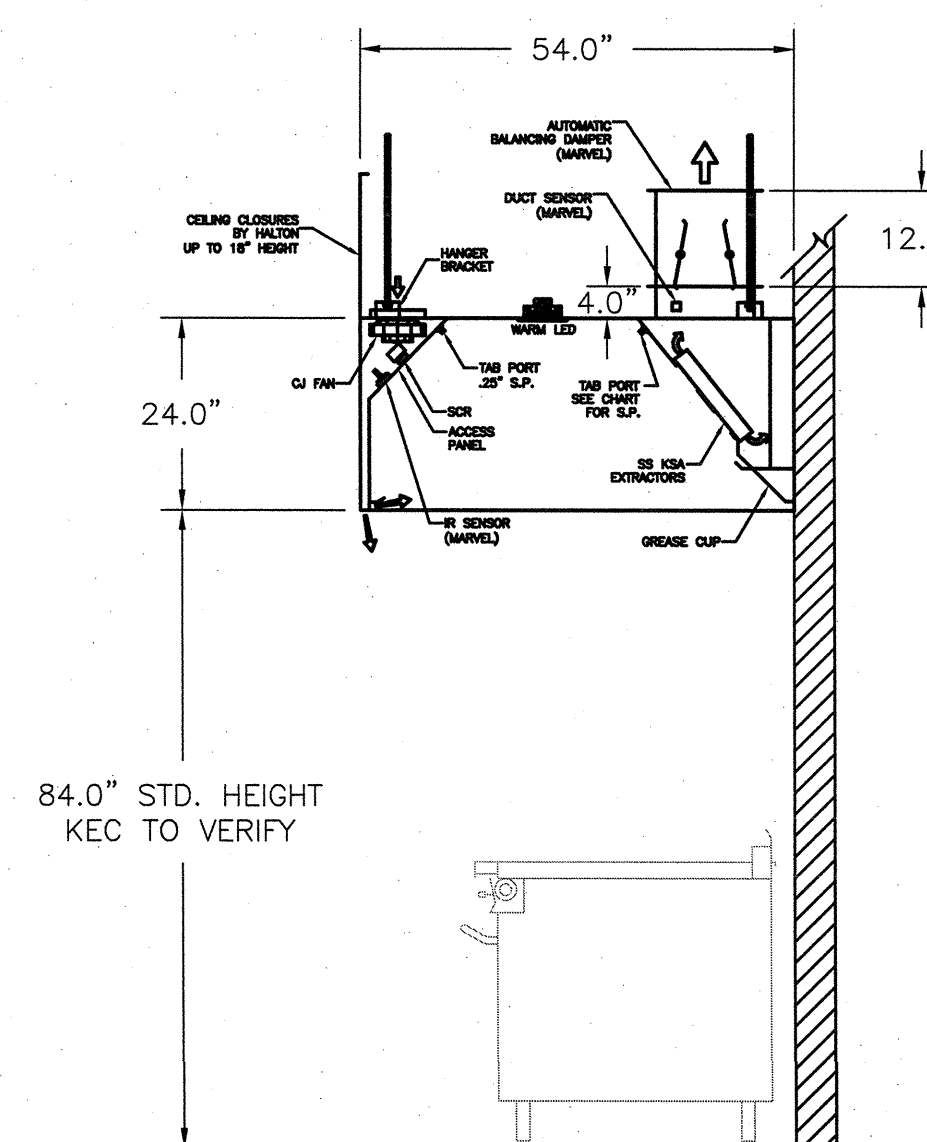
ITEM #2-21

REMOTE MOUNTED:
(1) REGULATED RELEASE (WITH ONE TANK)



- ANSUL R-102 FIRE SYSTEM
- ONE TANK SYSTEM (3 GALLON)
- 3/8" BLACK IRON PIPING WITH 3/8" S.S. APPLIANCE DROPS
- MECHANICAL GAS VALVE = (ADVISE SIZE)

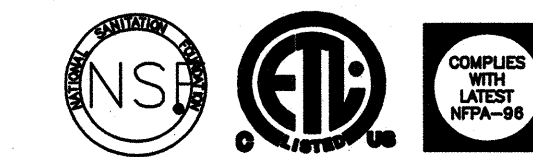
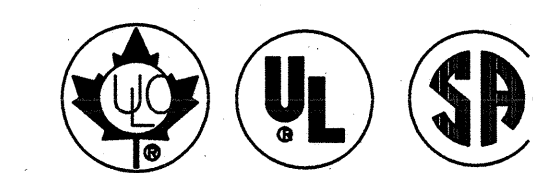
"KVE" SECTION VIEW
ITEM #2-21



REV	DATE	ISSUE
3	11.02.10	DSA BACKCHECK
2	07.22.10	CS HEALTH DEPARTMENT SUBMITTAL
1	07.01.10	DSA SUBMITTAL

DIABLO VALLEY COLLEGE
STUDENT SERVICES, CULINARY ARTS, FOOD SERVICES & COMMONS

DSA BACKCHECK



DEMO KITCHEN
LEVEL 1 EXHAUST HOOD
DETAILS

PROJECT #: D-611
DATE: 11.02.2010
SCALE: NONE